

Free!



The



CHESAPEAKE BAY EDITION

Published Every Other Week • Distributed in Maryland, Delaware, Southern Pennsylvania and Virginia



POWERBOATS & SAILBOATS ...Including Marine Services



SEE US JANUARY 19-21, 2024 AT THE
CHESAPEAKE BAY BOAT SHOW



JEANNEAU

1295



9.0 Leader CC
WA Also Available!

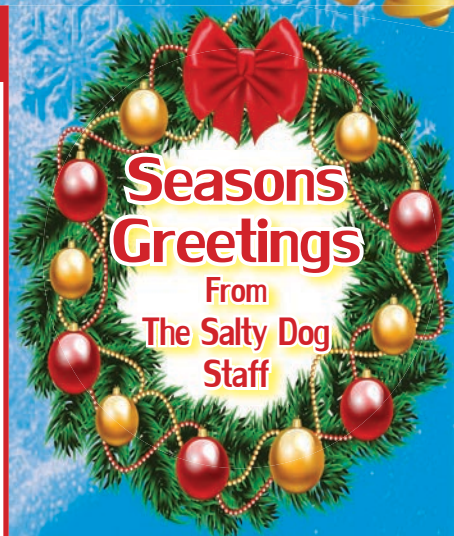


10.5 Leader WA

CC Also Available!



12.5 Leader



302-945-2254
WWW.RUDYMARINE.COM



25' 1994 PARKER 2520, 2017 Mercruiser Horizon 357, 5.7L 300hp Inboard, only 75hrs, closed cooling system, \$45,500 Negotiable, 443-742-5068, aswagner615@gmail.com 159109



33' 2000 AVANCE, Twin Mercury OBs, boat is in great condition, has been our favorite boat, no longer need \$32,000 443-871-5411 linda@shorelinedisposal.com 159372



20' 1969 BERTRAM MOPPIE, 3.7 170hp Mercruiser, well kept runs good, dual axle trailer rebuild 2022, canvas cover, 48 gallon gas tank '09, a true classic Ray Hunt design, \$16,500, 410-807-1010, sunwoodworking@gmail.com 159400

CONTACT US TODAY!!!

info@curtisstokes.net
410.919.4900



CurtisStokes.net

www.thesaltydog.com • 1-888-843-1585



410-784-7624

10551 Eldon Willing Rd
Chance, MD 21821

bobbykemp@scottscovemarina.com



TOHATSU



75HP



90HP



115HP



Upper Chesapeake Yacht Sales

John Curry • (610) 299-3598
www.upperchesapeakeyachtsales.com

**72' 2012
 Princess FBMV
 \$2.5Mil**



Extremely low hour motor yacht that has completed an extensive total refit by Worton Creek Marina of soft goods, electronics, interior LED lighting, appliances and AC units. The interior of this yacht is stunning and has been totally redone. Exterior improvements include new flybridge, aft and foredeck cushions, helm chairs, bridge electronics, sunroof cover, etc.



60' '10 Viking EB Sportfish, tower, C 32 Cat, (2) gensets, 4 SR/3 heads, mint, **\$2.1Mil**



39' '03 Beneteau 393 Sloop, 2 cabin/2 head, '21 inflatable and elec motor, very nice, widow looking for offers • **\$124,900**



36' '97 Catalina MK II, gen, AC, bow thruster, elec gridge, dingy and davits, exc cond • **\$79,900**



35' '87 Hunter Legend, Yanmar Dsl, elec fridge, windlass **\$24,900**



32' '02 Chaparral 320 Signature, T/5.7L Volvo, gen, AC • **Offers Wanted \$34,900**



28' '86 Bertram SF, Cummins Dsls, nice elects, super clean • **\$49,900**

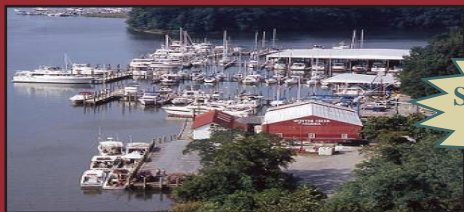


28' '01 Bayliner Ciera 2855 Sunbridge, 7.4L Merc, AC, nice, End of Year Price **\$21,900**



26' '06 Sea Ray Sundancer, 300hp Merc, BIII, NO AC, very nice • **\$34,900**

24' '07 Sea Ray Sundancer, 260hp Merc, BIII, AC, trl, very nice..... **\$44,900**
23' '09 Steiger Craft Long Beach, 225hp Suzuki 4-stroke, t-top, trailer, exc condition..... **\$43,900**



Expect The Same Superior Service From Our Brokerage That You Get From Our Marina

BOAT SALES & BROKERAGE
 • *Financing & Insurance Available* •
WORTON CREEK MARINA
 23145 Buck Neck Road • Chestertown, MD 21620
(410) 778-3282

SAILBOATS MOTORBOATS • YACHTS

Best and Fastest Access to the Bay

- Winterizing
- Indoor and Outdoor Winter Storage
- Shrink Wrapping
- Service & Repairs
- Cleaning • Sanding • Painting



PARISH CREEK
LANDING
Marina • Boatyard • Boatel

"WE WANT TO BE YOUR BOAT'S HOME!"

CALL FOR OUR SPECIALS!

4819 Woods Wharf Road
Shady Side, MD 20764

410.867.4800
parishcreeklanding.com

YEAR ROUND
**SLIPS • BOATEL
SERVICE**
Direct Access to the Bay



"Where Happiness Is Just A Boat Ride Away"



DECEMBER IS JON BOAT SEASON!



14' DURANAUTIC JON BOAT
Mercury 8hp, galvanized trailer • **\$5,895**

**DECEMBER
OUTBOARD
SPECIAL**
Mercury 2.5hp
\$725



LOWE 1652MT JON BOAT
Mercury 25 MLH, galvanized trailer • **\$10,695**

DuraNautic Jon Boat!

1236 Jon • \$2,080
1436 Jon • \$2,580



**BUNK TRAILERS
STARTING AT \$1,375**

Lowe Jon Boats

1448 Jon • \$3,695
1852MT Jon • \$7,475

GOLDSBOROUGH'S MARINE

709 W. Main St., Crisfield, Maryland
Ph.# 410-968-0852 • Email: merc71@verizon.net
www.crisfield.com/gold



23 Ultra



24 HFC



Powered by:



DANNY'S MARINE
(410) 228-0234 • www.dannysmarine.com
 Located on US Rt 50 (mile marker 86) • Chateau Drive near Linkwood, MD
 dannysmarine@comcast.net

Limited Time Offers. Not all models qualify. See Participating Suzuki Marine dealer for details or visit www.suzukimarine.com
 ©2023 Suzuki Motor of America, Inc.

Fishin' Boats From Fishin' Folks

Holiday Savings!

\$165,000



2022 Key West Boats 263 FS - Yamaha Engine, Center Console

\$26,900



2017 G3 20CC SHDW - Yamaha F115LB Engine

\$79,900

New Price



2022 C-Hawk Boats 25 - 2023 Yamaha F300XSB, Center Console

\$70,000



1992 C-Hawk Boats 29' Cabin - Yamaha F350 4 Stroke

\$26,900



2014 G3 186OCCJ Camo - 2014 Yamaha F90LA Engine

\$75,000



2019 Key West Boats 239FS - Yamaha F250XB Engine

New Price

GOOTEE'S MARINE

South of Cambridge On Maryland's Eastern Shore
1439 Hooper's Island Road, Church Creek, Maryland

800-792-0082

Gootees.com





410-353-4850

389 Deale Road • Tracys Landing, MD 20779

info@chesapeakenauticalcruises.com

YACHT SERVICES & MANAGEMENT • CAPTAIN SERVICES • YACHT CHARTERS • YACHT SALES

- USED BOATS FOR SALE -



2017 24' Avalon Pontoon, 115hp Mercury, low hours, DA trailer • \$39,200



2000 24' Sea Ray 245 Weekender, 357 Mag Merc w/Bll, approx 300 hrs, sleeps 2 • \$18,500



2011 21' Regal Bowrider, 4.3L Volvo, low hours, great running condition, trailer • \$28,000

37' '96 Sea Ray 370 Sundancer	\$58,000	27' '95 Sea Ray Sundancer	\$37,900
36' '89 Tiara Yachts Convertible	\$79,900	25' '22 Sea Fox 250 XB	\$119,995
34' '96 Bayliner Avanti	Reduced \$19,500	24' '98 Sea Ray Sundancer	\$18,000
32' '93 Chris Craft 322 Crowne	\$30,000	24' '18 Regal 2300 Bowrider	\$69,000
31' '98 Cabo Express	\$79,800	24' '05 Maxum 2400 SC3	\$24,900
30' '97 Maxum 3000 SCR	\$25,000	23' '98 Bayliner 2355 Ciera Sunbridge	\$13,000
28' '17 Sportsman 282	Reduced \$165,000	22' '12 Bennington 2275 RCW	\$48,000
27' '95 Grady White 272 Sailfish	Reduced \$34,900	22' '99 Bayliner Trophy	\$8,000

YACHT SALES

Your Premier Source for Selling or Purchasing A Yacht! Visit our websites to see our **Featured Listings!**

YACHT SERVICES & MANAGEMENT

**Installations • Repairs
Routine Maintenance • Bottom Work
Detailing • Spring Commissioning
Winterization • Shrink Wrapping
Diving • Pump outs • Haul Outs**
Transports

CAPTAIN SERVICES

Charters • Deliveries
Instruction
Sea Trials
Towing

LUXURY YACHT CHARTERS

**For Any Event Including:
Birthdays • Corporate & Social
Events • Weddings**
Destination & Overnight
Bareboat/Fishing/Sailing Charters

View Our Listings at www.chesapeakenauticalcruises.com



410-571-0045

2830 Solomons Island Road
Edgewater, MD 21037

ppmmarine@aol.com



**NEW MOTORS IN STOCK
AND READY TO GO!**



**Mercuriser
350 Mag**



**Mercuriser
383 FWC**

*Call for Pricing and Details on our Used Engines!

Other Services Offered:

**Marine Engine & Sterndrive Repair • Mercury Outboard Service, Optimax & Verado
Dealer for Mercury, MerCruiser, Volvo Penta & Indmar**

THE 3RD ANNUAL Chesapeake Bay BOAT SHOW

Presented by The Marine Trades Association of Baltimore County

MARYLAND STATE FAIR GROUNDS
2200 York Rd Timonium, MD 21093

THE Chesapeake Bay
BOAT SHOW

**SAVE
THE
DATE**

January 19-21, 2024



High-performance
boats with outstanding
seaworthy qualities.

Luxury Pontoons



Affordable Pontoons



JEANNEAU

Many Spectacular Jeanneau Boats Models and Exciting Pontoons Models On Display

Rudy Marine.com

302-945-2254 *Where Family Boating Begins*

32606 DUPONT BOULEVARD, DAGSBORO, DE 19939
3033 KENT NARROWS WAY SOUTH, GRASONVILLE, MD 21638

RUDY MARINE IS RENOWNED FOR
EXPERT ENGINE RIGGING SERVICES



DELAWARE HAS

NO SALES TAX!

Thinking of buying a yacht or boat?

Your best online search option is
CurtisStokes.net



Worldwide Yacht Sales

1.855.266.5676 | 410.919.4900 | info@curtisstokes.net

ALMARS

We Are A Full Service, Premier Mercury Outboard Repair Center!
Let Our Certified Mercury Technicians • Service Your Mercury Motor Needs!

Get 5 Year Warranty Now - November 30th on Any New Mercury OB 2.5hp - 400hp!

THAT'S 5 YEARS OF FACTORY WARRANTY AT NO COST TO YOU!



3 Year Factory Warranty + 2 Years Extra GOLD MPP*

*Excludes Racing Motors

MOST CONFIGURATIONS IN STOCK NOW 2.5HP-300HP!

Call for Compatibility and Complete Inventory!



2.5HP
3.5HP
4HP
5HP

6HP
8HP
9.9HP
15HP

20HP
25HP
50HP
60HP

75HP
115HP
150HP
200HP



THESE WILL GO FAST!

ATTENTION!

WE NOW HAVE A FEW **V-10 350'S!**

WE HAVE A FEW LEFTOVER VERADO L-6 350'S & 400'S!

CALL NOW TO ORDER YOUR 4-STROKE!

SALE

NEW 150HP 4-STROKE

NOW IN STOCK
ALL CONFIGURATIONS
PRICE TOO LOW TO ADVERTISE
CALL NOW!



175XL ProXS 4-stroke Black



225XL 4-stroke Black



250 XL 4-stroke White

WE NOW HAVE **200HP AND 250HP PRO XS 4-STROKES**

REMANUFACTURED OUTBOARD ENGINE SALE!
90hp - 250hp 1 Full Year Warranty
Starting As Low As \$5,495
Call for Details!

100's of Used Cowllings In Stock!
Call for Availability!

We Now Offer **INJECTOR SERVICE** with ONE Day Turnaround

CALL US FOR GREAT DEALS ON NON-CURRENT POWERHEADS!

CALL JACK FOR MOST CURRENT INVENTORY & PRICING!

701 Washington St., New Castle, DE

302-328-8541

www.almarsoutboards.net

HOURS: Monday - Friday: 8am - 5pm
CALL FOR GREAT PRICING ON NEW & USED MERCURY OUTBOARDS

NO HIDDEN COSTS
NOT RESPONSIBLE FOR TYPOGRAPHICAL ERRORS

All prices good while supplies last!



Pricing includes all rebates.



BEST PRICES OF THE YEAR ON REMAINING 2023 MODELS

Don't Miss Out On These Limited Time Offers!

New Dealer For  **NIMBUS**

ALSO IN STOCK:
Tender 8 • Commuter 9
Tender 9 • Tender 11
Weekender 9
FREE SLIP WITH PURCHASE
(Offer expires Jan 14, 2024)



Factory Direct Pricing



Cutwater's New Premium Brand!

Call for Details
ALSO IN STOCK:
25 Center Walk
25 Coupe
288 Coupe
32 Coupe



ALSO IN STOCK:
Antares 8 • 9 • 11
Flyer 8 • 9 • 10
Swift Trawler
35 • 41 • 48



 **CLARKS LANDING** on the Manasquan River
YACHT SALES 847 Arnold Avenue
Point Pleasant, NJ
732-899-5559 • www.ClarksLanding.com





TILLER SALE

tax free delaware

(302) 545-4768

4 Merit Drive

New Castle, DE 19720

A motor designed with a sportsman in mind

Our mid range 4-stroke outboards are the lightest weight in their class, without sacrificing performance. The revolutionary design offers a lower gear ratio for improved hole shot and top end speed.



MARINE TECHNICIAN TRAINING

RIDE THE CREST to CAREER SUCCESS



ENROLL FOR TRAINING TO BECOME A PROFESSIONAL
MARINE SERVICE TECHNICIAN

Our in-depth program includes training in: Seamanship, AC & DC Electrical, ABYC Standards, Air Conditioning & Refrigeration, Mechanical Systems, Stern Drives/Transmissions, Computerized-Fuel Injected Inboard and Outboard Engines, Inboard, Outboard and I/O Systems, Electronic Diesel Engines (*Cummins QSB 5.9 380 HP Common Rail Trainer*), Fiberglass & Gelcoat Repair, Plumbing and Sanitation Systems.

Financial Aid for those who Qualify • Career Placement Assistance



CALL NOW **866-905-4278**

www.autotraining.edu

900 Johnsville Blvd., Warminster, PA 18974

Supported by



with Training Materials & Equipment

For required program disclosure information, please go to www.autotraining.edu/consumerinformation.

SAVE when you Sell
... and when you Buy



boaters first™
yachtX.com

The trusted alternative to high cost brokerage and the hassle & risks of FSBO, we make selling your boat easy, safe and produce better outcomes with professional advisors, Web transaction management, escrow and multi-platform marketing - all for just 1.5% or less.

Ask about our buyer representation rebate
... and YachtX Rewards™ referral program.

boaters saving 85% in selling costs through yachtX.com



boaters receiving thousands in buyer rebates through yachtX.com



443.888.9190

"YachtX", "Boaters First", "YachtX Rewards" are trademarks of YachtX, Inc.



RESERVE YOUR SLIP TODAY!

MARINE REPAIRS & MAINTENANCE
STORAGE
HAULING
POOL ACCESS
EVENTS
LODGING

Call or E-mail:

410-758-2394

info@kennersleypoint.com



KENNERSLEY
POINT MARINA

CHURCH HILL, MARYLAND 410-758-2394



Join Us

JANUARY 19-21, 2024 MD STATE FAIRGROUNDS



If you love being on the water – you don't want to miss the Chesapeake Bay Boat Show 2024.

OVER 30+ Maryland Boat Dealers • 100+ Exhibitors • Fishing & Boat Seminars • Live Music • Food



Thank You To Our Current Sponsors

SCAN TO GET TICKETS



Find us on:



Tickets \$10 | Military \$7 | Age 12 & Under Free
thechesapeakebayboatshow.com • 410-279-1596

ADVERTISERS INDEX

ALMARS.....	9	GOOTEE'S MARINE.....	5
ANNAPOLIS CRUISAIR.....	20	J.J. BEST BANC & CO.....	22
ATC MAINE TRAINING.....	11	KENNERSLEY POINT MARINA.....	13
BOAT LIFTS UNLIMITED.....	17	PARISH CREEK LANDING.....	4
CHESAPEAKE BAY BOAT SHOW.....	14	PERSIMMON POINT.....	6
CHESAPEAKE NAUTICAL CRUSIES.....	6	RUDY MARINE.....	7
CLARKS LANDING.....	10	SCOTT'S COVE MARIA.....	2
CURTIS STOKES.....	8, 21	UPPER CHESAPEAKE YACHT SALES..	3
DANNY'S MARINE.....	5	UTSCH'S YACHT SALES.....	19
DC MARINE.....	11	WATERFRONT.....	23
DOUR YACHT SALES.....	24	WILDWOOD BOATING EXPO.....	17
GOLDSBOROUGH'S MARINE.....	4	YACHTX.....	12

THE LARGEST LOW PROFILE BOAT LIFT MANUFACTURER IN THE USA

CALL US FOR YOUR LOCAL DEALER!



Choose The Right Boat Lift, Choose

- Low Profile Design • Low Maintenance • 2/5 Yr Warr.
- Outside Walkway • Galvanized Steel Construction
- Aluminum Cradles Available • Capacity 800-40,000 lbs.

MAGNUM

BOAT LIFTS

Personal Watercraft Lifts

www.magnumlift.com

Fully Insured

BOAT LIFTS UNLIMITED

410-674-3100 • 1-800-268-5911

WE SERVICE MOST MAKES OF BOAT LIFTS!

Located in Odenton, MD, this full-service boat lift manufacturer has a network of over 180 distributors serving the Chesapeake Bay, Great Lakes and Atlantic Coast with Magnum Boat Lifting Products. Boat Lifts Unlimited is dedicated to customer satisfaction through prompt, courteous service on most existing boat lifts and timely installation of new boat lifts. Quality materials, attention to detail and innovative design have made Boat Lifts Unlimited one of the largest boat lift manufacturers in the U.S.

FREE LISTING WITH PHOTO ON THE INTERNET

PRIVATE AD RATES

- INTERNET ONLY UP TO 1 YEAR..... \$49⁰⁰
- 3 ISSUES NO PHOTO CLASSIFIED..... \$59⁰⁰
- 3 ISSUES WITH COLOR PHOTO WITH COLOR PHOTO ON INTERNET..... \$99⁰⁰
- INTERNET FEATURE ADD ON 4 WEEKS **AVAILABLE WITH AD PURCHASE ONLY!** ON THE SALTY DOG HOME PAGE \$49⁰⁰
- FRONT COVER..... \$40⁰⁰
- FACEBOOK FEATURE \$15⁰⁰
- PUBLICATION MAILED TO YOU..... \$2⁰⁰

TOTAL _____

FRONT COVERS ARE BASED ON AVAILABILITY

- CHECK MONEY ORDER DISCOVER
- MASTERCARD VISA AMERICAN EXPRESS

CC# _____

Expiration Date _____ Security Code _____

Advertiser's Name

Address

Phone
Where did you pickup "The Salty Dog"?

Store _____ Town _____

Fill out the description form below, **up to 125 characters (including spaces & punctuation) of advertising.** Please put one character per space beginning with the motor. Include a check, money order or credit card, and mail to us with a good quality COLOR photograph of your boat. Photos will only be returned if accompanied by a self-addressed stamped envelope.

AD COPY

FT. _____ YR. _____

MANUF. / MODEL _____

MOTOR _____

ACCESSORIES _____

LOCATION OF BOAT _____, _____
City State Zip Code

PRICE _____

PHONE # _____

EMAIL _____

**Send to: The Salty Dog
254 Brick Blvd • Suite 1
Brick, NJ 08723**

888-843-1585

Fax (732) 477-9000 • Email: info@thesaltydog.com

No refunds after Ad is processed. • Advertiser will be responsible for \$20 fee on returned checks.

YOUR BOAT LISTING CAN ALSO BE SUBMITTED ON THE INTERNET www.thesaltydog.com

SPECIAL FEATURES

PRIVATE BOAT ADS Pgs. 18-19

SUBSCRIPTION CHESAPEAKE BAY

SALTY DOG is published Bi-weekly 25 times a year. Papers are mailed **FIRST CLASS**. Your first issue will be mailed within 1 week. To subscribe, just fill in the amount of issues and multiply by \$2.00*

No. of issues _____ x \$2.00* = Total Cost _____

- CHECK MONEY ORDER MASTERCARD VISA

Credit Card No. _____

Exp. Date _____

Signature _____

Name _____

Address _____

City _____ State _____ Zip _____

Telephone _____

*Canada Subscription Add 10% - Bermuda Subscription Add 30%
Outside the Continental USA Add 50% • Credit Cards Only Outside USA



Mail To: THE SALTY DOG, 254 Brick Blvd • Suite 1, Brick, NJ 08723



A Bi-weekly Publication for Powerboats, Sailboats, Marine Equipment, Supplies, Services, Waterfront and Photo Ads

For More Info on Display Ads or Internet Listings
Call 888-843-1585 • Fax (732) 477-9000
info@thesaltydog.com • Mon.- Fri. 9:00 am to 4:00 pm

2024 FISHING & BOATING EXPO



Sponsored by:



Special Guest Speakers

JENNI ACKERMAN
Jiggin' Jersey Fluke



CAPTAIN STEVE SPAGNUOLA
Slow Pitch Jigging



WILDWOODS
CONVENTION CENTER
NEW JERSEY

The Fishing Expo is a unique two day event held at the Wildwood Convention Center, offers over 70,000sq. ft. of indoor exhibitor space with displays showcasing a wide range of exciting new products, services and programs that fishermen & boaters will find useful and will offer the latest "gotta have toys" available to view, demo and buy!

SATURDAY
January 6
9AM-5PM

SUNDAY
January 7
9AM-2PM

ADMISSION:

Adults \$10
Children 6-13 \$3
Children under 5 are FREE

For Vendor Info or to Learn More Visit:

fishingexpowildwood.com

See Color Photo on the Internet



46' 2002 AZIMUT FLYBRIDGE, T/Cat 3126B 450hp Dsls, Raymarine elec's, new: Fusion stereo, bow sunpads, cushions, Axiom displays, rebuilt turbos, batts, \$269,000, 609-693-9423 tidesendmarina1@gmail.com 158754

See Color Photo on the Internet



31' 1982 BERTRAM SPORTFISH, custom hardtop, 2002 Cummins 6BTA 270 Diamond Series Dsl, outriggers, \$115,000, 732-899-8010 sales@schraderyachts.com 158894

See Color Photo on the Internet



Steiger 25DV Miami
25' 2020 STEIGER CRAFT 25DV MIAMI
150 hours mint
\$149,500, 908-489-5098

158985

See Color Photo on the Internet



37' 2015 MIDNIGHT EXPRESS, Triple Mercury 300hp Verados, 595 hrs, loaded w/many upgrades & all elec's, full head, 3 livewells, one owner, \$289,900, 917-817-5084 info@deepwaterlanding.com 159281

See Color Photo on the Internet



28' 2011 Southport Boat Works 28 TE, (2) Yamaha F250s, Navnet 3D, Garmin pilot, Yamaha NEMA 2000 Gateway, Icom VHF, Furuno radar, \$179,900, 732-684-6702 tomtwee@yahoo.com 158944

See Color Photo on the Internet



25' 1994 PARKER 2520, 2017 Mercruiser Horizon 357, 5.7L 300hp inboard only 75hrs, closed cooling system, \$45,500 Negotiable, 443-742-5068 aswagner615@gmail.com 159109

See Color Photo on the Internet



35' 2014 FORMULA 350 CBR, T/8.2 Mag HO (390 hrs), Bill, Kohler gen, AP, joystick, loaded, Raymarine elec's, stereo, windlass, wet bat, head, arch & more, \$249,900 OBO, 917-817-5084 info@deepwaterlanding.com 159383

See Color Photo on the Internet



28' 2003 CHRIS CRAFT LAUNCH 28 HERITAGE EDITION, T/5.7L Volvo GI, 315 hrs, new canvas, teak table, battery charger, stereo, \$55,000, 732-899-8010 sales@schraderyachts.com 159301

See Color Photo on the Internet



24' 2004 CHAPARRAL SIGNATURE, 5.0L Volvo Penta, 360 hours, FF, GPS, well cared for & it shows, in water for test drive, \$22,000 MAKE OFFER, 609-287-2283 bhow127@aol.com 159328

See Color Photo on the Internet



32' 2002 REGULATOR CC, 2020 T/300hp Suzukis, 153 hrs, warr til 10/26, hardtop, livewell, forward seating, ORs, head/shower, LED lighting, rod holders, enclosure, trailer, \$155,000, 732-300-8897 popacoll@aol.com 159344

See Color Photo on the Internet



28' 1909 SEA RAY 280 SUNDANCER, T/Mercury V6, VHF, Garmin GPS,DF, fridge, micro, FW tank, 120 gal fuel, full canvas, clean & dry cabin, marina maint'd, \$17,900, 908-309-4016 almarmarine1@gmail.com 159096

See Color Photo on the Internet



23' 2011 SEA RAY 230 SLX, 5.0L Merc MPI, Bill, 255 hours, GPS/FF, stereo, one owner, \$49,900 OBO, 917-817-5084 info@deepwaterlanding.com 159394

See Color Photo on the Internet



32' 2013 REGAL 3200 BR, T/Volvo V8 300hp I/Os, approx 285 hrs, 10'4" beam, manifolds & risers in '22, many recent updates, exc condition, \$104,900, 917-817-5084 info@deepwaterlanding.com 159058

See Color Photo on the Internet



282 Mako 2006

28' 2006 MAKO 282
only 130 hours, \$20K in upgrades in 2021
908-489-5098

158987

See Color Photo on the Internet



22' 2017 CROWNLINE E2 XS, Yamaha 200hp, 270 hrs, cover, full head, GPS, stereo, fresh water system, loaded, turn key, Make Offer, \$62,900, 917-817-5084 info@deepwaterlanding.com 159164

See Color Photo on the Internet



31' 2019 REGULATOR, T/Yamaha 300hp, 600 hrs, Dual Garmin touchscreens, radar, VHF, Polk sound system, diver door, head, windlass, loaded, \$309,900, 917-817-5084 info@deepwaterlanding.com 159041

See Color Photo on the Internet



26' 2012 CHAPARRAL 264 SUNESTA, Merc 350 Mag, sporty & functional, vacuflush head & sink, manifolds & risers recently installed, brand new trailer, \$55,000, 609-693-9423 tidesendmarina1@gmail.com 158756

See Color Photo on the Internet



22' 2020 Clearwater 2200, Suzuki 225, Basically brand new, less than 50 total hrs, Comes with all the cushions for front of boat, Comes with 4k in electronics, trailer, \$60,000, 410-208-8498 devin13miller@gmail.com 159289

See Color Photo on the Internet



20' 1969 BERTRAM MOPPIE, 3.7 170 HP Mercruiser, Well kept runs good. Dual axle trailer rebuild 2022. Canvas cover 48G gas tank '09. A true classic Ray Hunt design., \$16,500, 410-807-1010 sunwoodworking@gmail.com 159400

See Color Photo on the Internet



17' 2008 LOWE FM 175DC, 17'3" Long, 92" Beam, 90hp Mercury Opti Max, Walk Through Windshield, MK Riptide Troll, Rugged, Roomy, Livewell, \$12,000, 571-239-8177 smithray@verizon.net 159214

See Color Photo on the Internet



16' 1982 KMV SKIFF, 1999 Yamaha 2-stroke, electric start 25hp OB w/new lower unit in '15, no trailer, solar powered battery charger, \$2,500, 732-684-6702 tomtwee@yahoo.com 159395

See Color Photo on the Internet



18' 1996 DUFFY ELECTRIC BOAT, (6) Volt batteries, new computer/board, speed controller, stereo, Loadrite trailer, winter cover, \$24,500, 732-899-8010 sales@schraderyachts.com 159302

See Color Photo on the Internet



17' 1982 BOSTON WHALER 17 NEWPORT, '91 Evinrude 88, new water pump, steering cable, DF, bottom paint, trailer tires, many upgrades, runs great, ready to fish, \$9,400, 609-287-4048 garysshoreservice@hotmail.com 158987

See Color Photo on the Internet



2010 YAMAHA VX CRUISER WAVERUNNER low hours, dual ski trailer, covers, pair, \$9,500, 917-817-5084 info@deepwaterlanding.com 159354

See Color Photo on the Internet



17' 1966 BOSTON WHALER, '21 Honda 100hp (203 hrs), new mahogany console, reversible helm seat, anchor compartment, Awlgrip hull/light grey topside, new: steering, batt switch, dual tank, fuel lines, yard trl, turn key, Asking \$24,900 OBO, 917-817-5084 info@deepwaterlanding.com 159382

See Color Photo on the Internet



16' 2016 Crestliner 1650 DISCOVERY, side console, Mercury 50hp, 3 batteries, full cover, FF, trolling motor, 37 hours, like new, \$15,900, 908-309-4016 almarmarine1@gmail.com 158981

Thousands of New and Used Boats Online at TheSaltyDog.com

UTSCH'S YACHT SALES

BETWEEN CANAL AND SCHELLENGER'S LANDING

Rt. 109 & Cape May Canal, Cape May, NJ (609) 884-BOAT (2628)

LICENSED

www.capemayharbor.com

INSURED



40' 1980 Viking FB Sedan, T/Detroit 671 Dsls 310hp • \$40,500



35' 1982 Bertram, T/Cat Dsls • \$15,000



42' 1982 Post Flybridge Convertible SF T/Detroit 671 TIs, 430hp each JUST REDUCED • OFFERS ACCETED



33' 1983 Egg Harbor, T/V8 gas Crusaders • \$13,900



28' 1995 Bayliner 2855 Command Bridge, 340hp Mercruiser V8 • \$4,900



31' 1989 Chris Craft Commander, T/Crusader V8 454 • \$14,900



35' 1975 Gulfstar Trawler, T/Dsls • \$7,500



CAT D-4 Bulldozer runs and works • \$15,000

- | | |
|--|---|
| 42' 1982 Post FB Conv SF, T/Detroit 671 TI 430hp.... OFFERS ACCEPTED | 28' 2002 Bayliner 2855 Ciera, 350hp Merc I/O..... \$4,900 |
| 34' 1981 Silverton Convertible..... AS IS \$1,000 | 28' 1976 Luhrs Flybridge Sedan, Crusader V8..... \$1,500 |
| 34' 1981 Silverton FB Conv, T/Crusader V8 gas..... SOLD | 25' 1973 Bristol Sloop, 9.9hp outboard..... \$1,500 |
| 33' 1994 Carver, T/Crusader V8 gas..... SOLD | 17' 2002 Aquatron, Merc I/O, trailer..... \$6,500 |
| 32' 1988 Carver, T/V8 gas..... AS IS \$3,000 | - MISC EQUIPMENT - |
| 30' 1985 Century 300 Grande, T/V8 gas inboard..... AS IS \$1,500 | Steel Boat Rack for 8 Boats..... \$Call |
| 29' 2002 Bayliner Express Cruiser, Mercruiser I/O..... \$19,900 | D-4 Bulldozer..... \$15,000 |

ANNAPOLIS CRUISAIR, INC.

Family Owned & Operated for Over 50 Years

SALES • SERVICE • INSTALLATION



U-LINE
U-Line Icemakers
110/115vAC

We will meet or beat any competitive price quote for these products!



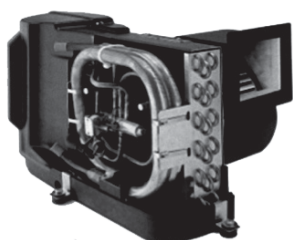
Marine Diesel Heaters



Espar

Cruisair®

New Turbo Air Conditioners • Heat Pumps



• We Have • BREATHE EASY AIR FILTERS

DOMETIC

SPOTZERO
Fresh Water Reverse Osmosis

Water Purification Systems



Sentry™

Cruisair

BATTERY CHARGERS



SAFEST CHARGER ON THE MARKET!



Vitrifrigo

REFRIGERATORS

WAECO

Adler/Barbour®

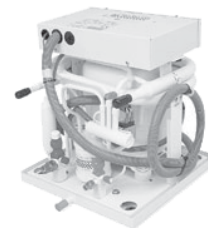


Eskimo Ice 600 Ice Pump

Provides up to 600 lbs. of fresh ice in a day from your ships water tank.



MARINE AIR SYSTEMS®
AIRRRRRRRRR
by Dometic GROUP



STINKY BOAT?

We Have **NEW** Breathe Easy Air Purifiers



KOHLER.



- Generators -

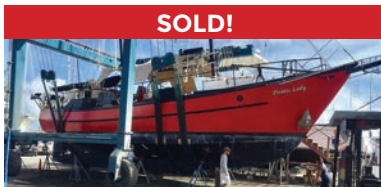
Fischer Panda

Onan

2124 Renard Ct. • Annapolis, MD
(410) 224-0970 • (410) 974-6136 • Fax (410) 224-0050
www.annapoliscruisair.com



Worldwide Yacht Sales | Yacht Charters | New Yacht Construction



SOLD!

72' Trade Rover



SOLD!

50' Chris-Craft



SOLD!

48' Evans Boats



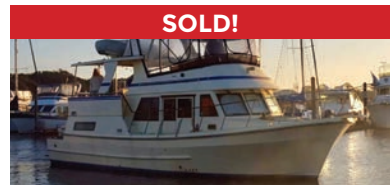
SOLD!

44' DeFever



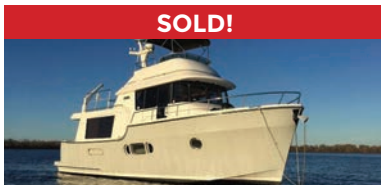
SOLD!

44' Gulfstar



SOLD!

42' Fu Hwa



SOLD!

40' Fathom



SOLD!

40' Hinckley



SOLD!

36' C&C



SOLD!

36' Bristol



SOLD!

32' Eagle



SOLD!

26' Sisu

List your boat with us and join our **SOLD** list!

To see more details about these and all other yachts around the globe, please visit our website below.

Annapolis, MD • St. Michaels, MD • Delaware City, DE • Deltaville, VA • Woodbridge, VA
Telephone: 410.919.4900 • Email: info@curtisstokes.net

www.curtisstokes.net



**OWN the BOAT.
OWN the SEA.**



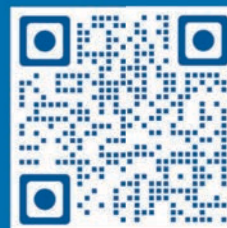
For low rates, long terms, re-power loans and to finance boats of **ANY AGE**, choose BEST



CALL a LOAN OFFICER NOW
1-800-USA-1965 ext 2



or APPLY in JUST 5 MINUTES
JJBestBoatLoans.com



Subject to consumer loan program requirements and credit approval. Certain fees, closing costs and restrictions may apply. Minimum loan amount for pleasure use is \$10,000 in 48 states. J.J. Best & Co. operates under the names J.J. Best Banc & Co. and J.J. Best Bank International.



WATERFRONT MARINE

#1 GOLL AVE, SOMERS POINT, NJ ~ 609-926-1700
 281 PRINCETON AVE, BRICK, NJ ~ *Featuring Chaparral* ~ 732-202-6961
 2822 SOLOMON'S ISLAND RD, EDGEWATER, MD ~ 443-949-9041

Premium Brands ~ Exceptional Service

WWW.WATERFRONTMARINE.COM

NOW A DEALER FOR MERCURY OUTBOARDS • SEVERAL MOTORS IN STOCK!



- PREOWNED BOATS -



Located in Somers Point

2022 Robalo R247, T/Yamaha F150, loaded • \$149,900



Located in Somers Point

2013 Chaparral 216 SSi, 300hp Volvo, 305 hrs, rack kept • \$37,900



Located in Somers Point

2013 Chaparral 225 SSi, Merc 350 Mag FWC, Bill, 218 hrs • \$37,900



Located in Somers Point

2020 Beneteau Barracuda 23 Merc 300 4-stroke Verado • \$118,900

BOWRIDERS & PONTOONS

30' '17 Chaparral 307 SSS, T/Volvo Penta 300 DP w/Joystick	Pending
28' '12 Chaparral 284 Suneseta, Volvo Penta 8.1 GI DP 400	\$59,900
27' '17 Chaparral 277 SSS, Volvo Penta 380 PD	\$84,900
26' '18 Chaparral 264 Sunesta, Volvo Penta 350 DP	\$79,900
26' '12 Chaparral 264 Sunesta, Volvo Penta 5.7 300 DP	\$45,900
25' '18 Chaparral 257 SSS, Volvo Penta V8 380 DP	\$89,900
25' '16 Cypress Bay Pontoon Seabreeze 250, Mercury 90hp 4-stroke	\$22,700
25' '21 Bennington 25QXFBWA, Yamaha F250	\$149,900
24' '14 Chaparral 244 Sunesta, Volvo Penta V8 300hp DP	\$41,900
24' '15 Chaparral 246 SSI, Merc 350 Mag 300hp Bill	\$49,980
24' '03 Sea Ray 24 Sundeck, 2016 Mercruiser 383	\$19,900
24' '15 Chaparral 246 SSI, Merc 350 Mag Bill	\$49,900
24' '17 Chaparral 246 SSI, Volvo Penta 5.7L 300 DP	\$55,900
24' '15 Regal 24 Fasdeck, Volvo Penta 5.0L 270 DP	\$34,900
23' '20 Beneteau Barracuda 23 Pilothouse, Mercury 300hp Verado	\$118,900
23' '21 Chaparral 230 Suncoast, Yamaha F250 XCA	\$86,997
23' '21 Bennington 23LSRC Tritoon, Yamaha F175	\$54,900
23' '06 Sweetwater 2386F Pontoon, Yamaha F90	\$19,900
22' '13 Hurricane 2200 DC, Yamaha F150	Pending
22' '08 Chaparral 224	\$29,900
22' '16 Chaparral 224 Sunesta, Volvo Penta 280	\$47,900
21' '22 Chaparral 21 SSI Fish & Ski, Volvo Penta V6 SX 250	\$61,499
21' '13 Chaparral 216 SSI	\$37,900

19' '13 Crownline 19XS Bowrider, Mercury 115hp OB, trailer	\$24,900
18' '16 Chaparral 18 H2O	\$22,900

FISHING BOATS

36' '22 Robalo R360 CC, Triple Yamaha F300, lift kept	\$597,000
32' '03 Century 3200 Offshore, Yamaha F250	\$45,000
27' '19 Robalo R272, T/Yamaha F250	SOLD
26' '05 Rinker 262 Captiva Cuddy	\$14,900
25' '22 Grady White 257 Fisherman, T/Yamaha 200hp, trailer	Pending
23' '20 Sea Swirl 2301 WA Cuddy, Yamaha F250, trailer	SOLD
22' '18 Robalo R222 Explorer, Yamaha F200	\$64,900
22' '21 Sailfish 220 Center Console, Yamaha F200	\$64,900
22' '18 Robalo R222 Explorer, Yamaha F200, trailer	Pending
22' '15 Robalo R222 Center Console, Yamaha F200	\$49,800
22' '19 Sea Hunt 225 Ultra	\$61,900
20' '21 Maycraft 2000 CC, Yamaha F200, trailer included	\$42,500
19' '01 Larson LX195, I/O, trailer	\$12,900

CRUISERS & CUDDY CABINS

22' '13 Chaparral 225 SSI Cuddy, Mercruiser 350 Mag	\$37,900
---	----------

JET BOAT

24' '10 Yamaha 242 Limited Jet Boat, T/4-strokes	SOLD
22' '15 Chaparral 223 Vortex, T/Rotax 4-Tech 200hp motors, trailer	\$35,300

HANDYMAN SPECIAL

25' '12 Sundance NXV 25, needs motor	\$Call
--------------------------------------	--------

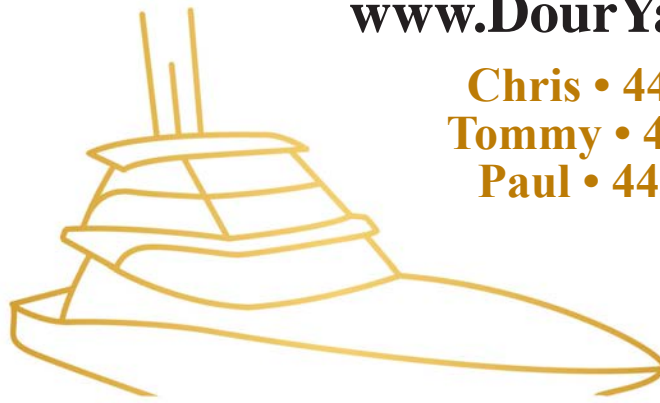


AUTHORIZED PARTS & SERVICE



www.DourYachtSales.com

Chris • 443-877-7080
Tommy • 443-655-6099
Paul • 443-309-1340



DOUR YACHT SALES

CHESAPEAKE CITY, MD



58' 2013 Tiara Yachts 5800 Sovran
\$849,000



54' 2000 Sea Ray 540 Sundancer
\$334,000



45' 2000 Cruisers Yachts
4450 Express MY • \$219,000



44' 2009 Regal 4460
\$249,000



32' 2019 Monterey 305 SS
\$163,999



34' 2006 Sea Ray 340 Sundancer
\$119,000

Interested in Selling...
Give Us A Call Today!
443.877.7080