

Free!



The

# The Salty Dog



## CHESAPEAKE BAY EDITION

Published Every Other Week • Distributed in Maryland, Delaware, Southern Pennsylvania and Virginia

### POWERBOATS & SAILBOATS ...Including Marine Services



**Largest Inventory of  
In Stock Boats in the Region!**  
302-945-2254  
www.RudyMarine.com



**Largest Inventory of  
In Stock Pontoon in the Region!**  
302-945-2254  
www.RudyMarine.com



**Largest Inventory of  
In Stock Pontoon in the Region!**  
302-945-2254  
www.RudyMarine.com



**29' 1992 SEA RAY SUNDANCER**, Twin 4.3L V6, beautiful inside & out, all new vinyl, sleeps 6, micro, fridge, pumpout head, AC/HT, port engine new last yr, boat is in water, **\$18,000** OBO, 267-640-1156, Burnslej1428@gmail.com 155723

### List Your Boat As Low As \$49!

Go to [www.thesaltydog.com](http://www.thesaltydog.com)  
to get started!

Private Boat Ads Only



**26' 1984 ROBALO 260 CC**, T/Merc 200hp 2-stroke, Estate Sale, ONE OWNER BOAT, all original boat, EZ loader trailer full tuna tower with steer station, Rupp outriggers, extras, **\$10,000**, 443-790-8883, Watts1030@aol.com 158693



**33' 1985 TROJAN 10M FB SEDAN**, T/350 gas IB, gen, AC, island berth, salon w/sofa, dinette, hardtop, ORs, platform, elecs, in water w/systems activated, ready to fish offshore or extended cruising, **\$17,850**, 443-553-3982, jmswoody@yahoo.com 158739



**22' 2022 SAILFISH 220 CC**, Dealer's personal boat for '22 summer, 150hp Mercury 4-stroke w/approx 50 hrs, kept & used in fresh water, bottom painted, fresh coat of wax & stored indoors, **\$79,400**, 443-553-3982, jmwwoody@yahoo.com 158395



**41'5" 1999 BAYLINER 4087**, original 77 hours on her. 3 staterooms, while the owner's aft cabin is surprisingly comfortable and includes a walkaround double berth, vanity, and a private head with separate stall shower, **\$77,000**, 410-474-2377, larryreich159@aol.com 158772

Annapolis, MD • St. Michaels, MD  
Deltaville, VA • Woodbridge, VA  
Delaware City, DE

**CONTACT US TODAY!**  
info@curtisstokes.net  
410.919.4900



[www.curtisstokes.net](http://www.curtisstokes.net)

**1-888-843-1585 • Private Boat Information on Page 17**



410-784-7624

10551 Eldon Willing Rd  
Chance, MD 21821

bobbykemp@scottscovemarina.com



TOHATSU



75HP

90HP

115HP

# Upper Chesapeake Yacht Sales

John Curry • (610) 299-3598  
[www.upperchesapeakeyachtsales.com](http://www.upperchesapeakeyachtsales.com)



Mint condition! Upper Bay fresh water luxury bowrider with AC sleeping area, genset, electric grill and full canvas. Efficient Volvo dual prop drives with joystick control system. No bottom paint. Must see! Venture 12,500# aluminum trailer available at extra cost.



**REDUCED!**  
 56' '70 Custom Featherstone CC Ketch • gen, AC, loaded, nice • \$59,900



**REDUCED!**  
 37' '05 Cruisers 370 Express, T/315hp Yanmar Dsls, gen, AC, new canvas, mint • \$159,900



34' '05 Rinker 342 Fiesta Vee, 350 MPI FWC Horizons, super clean, \$69,900



33' '92 Sea Ray Sundancer T/5.7L Merc V-Drives, gen, AC \$24,900



32' '05 Sea Ray Sundancer, T/320hp Mercruiser V-Drive, gen, AC • \$89,900



26' '03 Crownline 262 CR 300hp • \$20,900



**REDUCED!**  
 26' '86 Pacemaker FB Cruiser New 350hp Merc, very nice \$14,900



**REDUCED!**  
 23' '01 Sea Fox 230 WA, 4.3L Mercruiser, hardtop, numerous upgrades • \$7,900

36' '85 Sea Ray Aft Cabin, T/260hp, gen, AC .....	\$19,900
34' '84 Silverton FB Convertible, T/270hp, gen, AC, very nice .....	\$17,900
27' '98 Mariah BR, 330hp Merc .....	\$7,900



Expect The Same Superior Service From Our Brokerage That You Get From Our Marina

**BOAT SALES & BROKERAGE**  
 • Financing & Insurance Available •  
**WORTON CREEK MARINA**  
 23145 Buck Neck Road • Chestertown, MD 21620  
**(410) 778-3282**

# CALL TO RESERVE YOUR 2023 SLIP OR RACK SPOT

## Best and Fastest Access to the Bay

- 100+ Wet Slips
- 70+ Rack Boatel
- 50+ Outdoor Racks
- Trailer Parking
- High Speed Wireless
- New Bathrooms w/Showers



"WE WANT TO BE YOUR BOAT'S HOME!"

### CALL FOR OUR SPECIALS!

4819 Woods Wharf Road  
Shady Side, MD 20764

**410.867.4800**  
parishcreeklanding.com

YEAR ROUND  
**SLIPS • BOATEL SERVICE**  
Direct Access to the Bay



Where Happiness Is Just A Boat Ride Away!

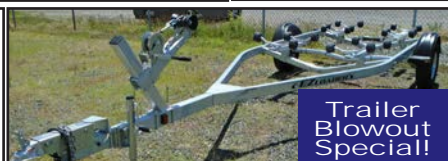
Ph.# 410-968-0852  
709 W. Main St., Crisfield, Maryland  
Email: merc71@verizon.net



Mercury 8MH.....	\$1,920
Mercury 9.9MH.....	\$2,145
Mercury 15MH.....	\$2,475
Mercury 20MLH.....	\$3,075
Mercury 25MH.....	\$3,345
Mercury 50 ELPT .....	\$6,525
Mercury 90 EXLPT .....	\$8,495
Mercury 115 XL Pro Max .....	\$10,595
Mercury 150 XL Pro Max .....	\$13,200
Mercury Standard Controls, Cable & Aluminum Propeller Installation Package \$1,395	

Yamaha 2.5 MH .....	\$900
Yamaha 9.9 MH .....	\$2,510
Yamaha 15ELH .....	\$3,095
Yamaha 25ELHPT .....	\$4,295
Yamaha 30ELPT .....	\$5,650
Yamaha 60 ELPT .....	\$7,160
Yamaha 90 ELPT .....	\$9,095
Yamaha 115 XLPT VMax.....	\$10,295
Yamaha 150 XLPT V Max.....	\$14,400
Yamaha Standard Controls, Cable & Aluminum Propeller Propeller Installation Package \$1,395	

EZ Loader 68BT  
14-17 1250 Galvanized  
**\$1,795**



Trailer Blowout Special!

Load Rite 1,700lbs  
Galvanized Bunk Trailer  
**\$2,095**

# Goldsborough's Marine



23 Ultra



24 HFC



Powered by:



**DANNY'S MARINE**  
**(410) 228-0234 • www.dannysmarine.com**  
 Located on US Rt 50 (mile marker 86) • Chateau Drive near Linkwood, MD  
 dannysmarine@comcast.net

Limited Time Offers. Not all models qualify. See Participating Suzuki Marine dealer for details or visit [www.suzukimarine.com](http://www.suzukimarine.com)  
 ©2020 Suzuki Motor of America, Inc.

Fishin' Boats From  
 Fishin' Folks

# SPRING SAVINGS!



2022 Key West Boats 263 FS -  
 Yamaha Engine, Center Console



2005 HydraSports 3300CC  
 Vector Tower - 2018 Suzuki DF350



2005 HydraSports 3300VX Vector  
 Express - Yamaha XF425



2021 Key West Boats 263 FS -  
 Yamaha F200XCA



2000 HydraSports 2596CC /  
 2600CC Vector - 2016 Yamaha  
 F200XCA



2000 HydraSports 2800CC  
 Vector - 2007 Suzuki DF300

# GOOTEE'S MARINE

South of Cambridge On Maryland's Eastern Shore  
 1439 Hooper's Island Road, Church Creek, Maryland



**800-792-0082**

**Gootees.com**



**410-571-0045**

2830 Solomons Island Road  
Edgewater, MD 21037

ppmmarine@aol.com



**NEW MOTORS IN STOCK  
AND READY TO GO!**



**MerCruiser  
350 Mag**



**MerCruiser  
383 FWC**

\*Call for Pricing and Details on our Used Engines!

Other Services Offered:

**Marine Engine & Sterndrive Repair • Mercury Outboard Service, Optimax & Verado  
Dealer for Mercury, MerCruiser, Volvo Penta & Indmar**

**MARINE TECHNICIAN TRAINING**

**RIDE THE CREST**  
to CAREER SUCCESS



**ENROLL FOR TRAINING TO BECOME A PROFESSIONAL  
MARINE SERVICE TECHNICIAN**

**Our in-depth program includes training in:** Seamanship, AC & DC Electrical, ABYC Standards, Air Conditioning & Refrigeration, Mechanical Systems, Stern Drives/Transmissions, Computerized-Fuel Injected Inboard and Outboard Engines, Inboard, Outboard and I/O Systems, Electronic Diesel Engines (*Cummins QSB 5.9 380 HP Common Rail Trainer*), Fiberglass & Gelcoat Repair, Plumbing and Sanitation Systems.

**Financial Aid for those who Qualify • Career Placement Assistance**



**CALL NOW 866-656-7794**

**www.autotraining.edu**

900 Johnsville Blvd., Warminster, PA 18974

Supported by



with Training Materials & Equipment

For required program disclosure information, please go to [www.autotraining.edu/consumerinformation](http://www.autotraining.edu/consumerinformation).

**Rt. 113 Boat Sales and Service**

[Rt113BoatSales.net](http://Rt113BoatSales.net)

TAX FREE

**20 years ANNIVERSARY**

**YAMAHA Service**  
Master Yamaha Technician on Staff

**P PURSUIT** UNRELENTING PERFORMANCE THAT IS BUILT WITH INTEGRITY AND A REFINEMENT BEYOND COMPARE



**DUAL CONSOLES**  
from 24 - 36 ft.

**OFFSHORE**  
from 32 - 44 ft.

**SPORT**  
from 24 - 42 ft.

**COBIA** Quality is More Affordable Than You Think From 22 - 35 Ft.



**350 CC**

**262 CC**

**240 CC**

**PATHFINDER** Angler Driven and #1 for a Reason From 22 - 27 ft.



**2700 OPEN**

**2600 TRS**

**2400 TRS**

**BROKERED BOATS WANTED!**

CLEAN, LATE MODELS UP TO 35 FT.  
LOW FEES WITH GREAT RESULTS!



SERVICING Ocean City and Indian River Marinas

**MOBILE SERVICE UNITS**

**AVAILABLE BROKERED BOATS**

- 2022 Cobia 330 DC Whisper Gray Twin XF425s \$325,000 **SOLD**
- 2022 Cobia 320 CC Azul Blue Twin XF425s \$299,999
- 2022 Cobia 280 DC Atlantic Blue Twin F250 \$235,000 **SOLD**
- 2018 Cobia 261 CC Anthracite Gray Twin F150 \$99,999 **SOLD**
- 2015 Contender 25 Bay Gray F300 \$87,500
- 2017 Pathfinder 2500 Hybrid Atlantic Blue F300 \$97,500 **SOLD**
- 2018 Pathfinder 2200 TRS Blue/White F200 \$69,999
- 2007 Triumph 215 CC White F150 \$24,999 **SOLD**
- 2017 Tidewater 230 CC \$63,500
- 2015 Contender 25 Bay \$87,500
- 2007 Triumph 235 CC \$34,999

**In Stock & Incoming!**

- |                      |              |
|----------------------|--------------|
| Pursuit DC246        | Cobia 220 CC |
| Pursuit DC266        | Cobia 220 CC |
| Pursuit S288         | Cobia 220 CC |
| Pursuit S288         | Cobia 240 CC |
| Pursuit DC326        | Cobia 240 CC |
| Pursuit DC326        | Cobia 240 CC |
| Pursuit S428         | Cobia 262 CC |
| Pathfinder 2200 TRS  | Cobia 262 CC |
| Pathfinder 2200 TRS  | Cobia 262 CC |
| Pathfinder 2400 TRS  | Cobia 262 CC |
| Pathfinder 2400 TRS  | Cobia 280 CC |
| Pathfinder 2400 TRS  | Cobia 280 CC |
| Pathfinder 2400 TRS  | Cobia 280 CC |
| Pathfinder 2600 TRS  | Cobia 301 CC |
| Pathfinder 2600 TRS  | Cobia 320 CC |
| Pathfinder 2700 OPEN | Cobia 350 CC |

**GARMIN**  
Certified Installer

**JL AUDIO**

**10% OFF**  
ALL IN STOCK ITEMS THROUGH MAY 31

RT113 BoatSales.net • 52 Cemetery Rd. Selbyville, DE 302.436.1737



Worldwide Yacht Sales | Yacht Charters



**SOLD!**

1997 49' Grand Banks



**SOLD!**

2001 44' Cruisers Yachts



**SOLD!**

1987 44' Symbol



**SOLD!**

1983 44' DeFever



**SOLD!**

2007 43' Mainship



**SOLD!**

2007 43' Mainship



**SOLD!**

1989 42' Grand Banks



**SOLD!**

1998 41' Silverton



**SOLD!**

2017 37' Boston Whaler



**SOLD!**

2009 37' Nordic Tug



**SOLD!**

2003 36' Monk



**SOLD!**

2006 34' Mainship

Thinking of selling your Boat? List with us and join our **SOLD** list!

To see more details about these and all other yachts around the globe, please visit our website below.

Telephone: 410.919.4900 • Email: [info@curtisstokes.net](mailto:info@curtisstokes.net)

[www.curtisstokes.net](http://www.curtisstokes.net)



# ALMARS

**PLEASE CALL FOR UPDATES!  
Motors Are Slowly Arriving!**

*We Are A Full Service, Premier Mercury Outboard  
Repair Center! Let Our Certified Mercury Technicians  
Service Your Mercury Motor Needs!*

**MOST CONFIGURATIONS  
IN STOCK NOW  
2.5HP-200HP!**

**Call for Compatibility  
and Complete Inventory!**



- |              |              |             |              |
|--------------|--------------|-------------|--------------|
| <b>2.5HP</b> | <b>6HP</b>   | <b>20HP</b> | <b>75HP</b>  |
| <b>3.5HP</b> | <b>8HP</b>   | <b>25HP</b> | <b>115HP</b> |
| <b>4HP</b>   | <b>9.9HP</b> | <b>50HP</b> | <b>150HP</b> |
| <b>5HP</b>   | <b>15HP</b>  | <b>60HP</b> | <b>200HP</b> |

**THESE WILL GO FAST!**



**ATTENTION!**

**WE NOW HAVE A FEW 200'S!**

**WE NOW HAVE A FEW V-10  
350'S!**

**WE HAVE A FEW LEFTOVER  
VERADO L-6 350'S & 400'S!**

**Call now for Details!  
Limited Quantities!**

**CALL  
NOW TO  
ORDER  
YOUR  
4-STROKE!**



150  
4-stroke  
Black



150 ProXS  
4-stroke  
Black



175XL ProXS  
4-stroke  
Black



200  
Sea Pro  
Black



225XL  
4-stroke  
Black



250 XL  
4-stroke  
White

**100's of Used Cowllings  
In Stock!  
Call for Availability!**

We Now Offer  
**INJECTOR SERVICE**  
with ONE Day Turnaround

**REMANUFACTURED OUTBOARD ENGINE SALE!**

**90hp - 250hp 1 Full Year Warranty**

**Starting As Low As \$5,495 Call for Details!**

**CALL US  
FOR GREAT  
DEALS ON  
NON-CURRENT  
POWERHEADS!**

**CALL JACK FOR MOST  
CURRENT INVENTORY & PRICING!**

701 Washington St., New Castle, DE

**302-328-8541**

[www.almarsoutboards.net](http://www.almarsoutboards.net)

HOURS: Monday - Friday: 8am - 5pm  
CALL FOR GREAT PRICING ON NEW  
& USED MERCURY OUTBOARDS

**NO HIDDEN COSTS**  
NOT RESPONSIBLE FOR TYPOGRAPHICAL ERRORS



All prices good  
while supplies last!

Pricing includes all rebates.

# CLARKS LANDING

YACHT SALES

Factory Direct Pricing

## SOLARA

Cutwater's New Premium Brand!

**FREE SLIP WITH PURCHASE**  
*Call for Details*  
25 Centerwalk  
25 Dual Console  
25 Coupe



25 Centerwalk



25 Dual Console



25 Coupe



31 Centerwalk

# BENETEAU



**FREE SLIP WITH PURCHASE**  
*Call for Details*  
Flyer 8  
Flyer 9  
Flyer 10



Flyer 8 Spacedeck  
REBATE \$2,380



Antares 8  
REBATE \$2,940



Flyer 9 Sundeck  
REBATE \$3,780

# Wellcraft



202 & 222 Fisherman



262 Fisherman



355 Commuter

New Dealer For

# NIMBUS

**FREE SLIP WITH PURCHASE**  
*Call for Details*



Tender 11



# CLARKS LANDING

YACHT SALES

on the Manasquan River  
847 Arnold Avenue  
Point Pleasant, NJ

732-899-5559 • [www.ClarksLanding.com](http://www.ClarksLanding.com)



**IN STOCK NOW**

**JEANNEAU**

895 Sport  
24' through 30'

**IN STOCK NOW**

NC Cruiser 1095  
24' - 41'

**IN STOCK NOW**

Leader 12.5  
24'-41'

Leader 6.5 CC  
22' - 35'

High-performance boats with outstanding seaworthy qualities.

**IN STOCK NOW**

**Bentley**  
PONTOONS

Bentley 22 Elite Pontoon

**IN STOCK NOW**

**SunChaser**

Sunchaser Vista 22 Fish Pontoon

**RUDY MARINE IS RENOWNED FOR EXPERT ENGINE RIGGING SERVICES**

**YAMAHA**

**AVAILABLE YAMAHA OUTBOARD ENGINE MODELS**

XF425NSB2 (DEC)	VF250XB	VF115LA	F40LA	T9.9XWHB
F300XA	F200XCA (DEC)	F115LB	F40LEHA	F9.9SMHB
F300UCB (DEC)	LF200XCA (DEC)	F90LB	<del>F250WTHC</del>	F6SHA
F300XCB (DEC)	VF175XA	F70LA	<del>F25LWTHC</del>	F4SHA
F250XCB (DEC)	F150LB	F60LB	T25LWTC	F2.5SMHB
F250XB	VF150XB	T60LB	F9.9LMHB	

**IN STOCK**

**Rudy Marine.com**  
Where Family Boating Begins

32606 DUPONT BOULEVARD, DAGSBORO, DE 19939  
ONLY MINUTES FROM THE CAPE MAY-LEWES FERRY  
**302-945-2254**

**DEALER INQUIRIES WELCOME**

DELAWARE HAS **NO SALES TAX!**

**ZERO DOWN FINANCING AVAILABLE ON ALL MODELS**

\*ALL PREVIOUS PURCHASES ARE EXCLUDED

# why get towing? | breakdowns happen



Breakdowns are unpredictable, make them less stressful with an Unlimited Towing Membership from TowBoatU.S. You can relax, we've got your back.



**BoatU.S.**<sup>®</sup>

**JOIN TODAY!**  
**BoatUS.com/Towing**

Details of services provided can be found online at BoatUS.com/Agree. TowBoatU.S. is not a rescue service. In an emergency situation, you must contact the Coast Guard or a government agency immediately.

# RESERVE YOUR SLIP TODAY!

MARINE REPAIRS & MAINTENANCE  
STORAGE  
HAULING  
POOL ACCESS  
EVENTS  
LODGING

Call or E-mail:

410-758-2394

[info@kennersleypoint.com](mailto:info@kennersleypoint.com)



KENNERSLEY  
POINT MARINA

CHURCH HILL, MARYLAND 410-758-2394

# ANNAPOLIS CRUISAIR, INC.

Family Owned & Operated for Over 50 Years

**SALES • SERVICE • INSTALLATION**



**U-LINE**  
U-Line Icemakers  
110/115vAC

**We will meet or beat any competitive price quote for these products!**

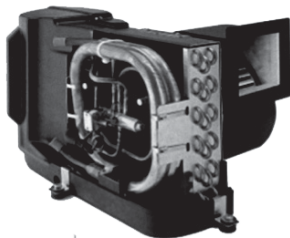


Marine Diesel Heaters



## Cruisair®

New Turbo Air Conditioners • Heat Pumps

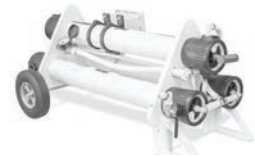
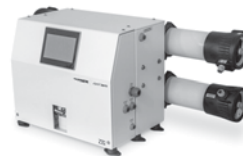


• We Have • BREATHE EASY AIR FILTERS

DOMETIC

SPOTZERO  
Fresh Water Reverse Osmosis

Water Purification Systems



## Vitrifrigo

REFRIGERATORS



## Sentry™

Cruisair

BATTERY CHARGERS



SAFEST CHARGER ON THE MARKET!

## WAECO

Adler/Barbour®

## Eskimo Ice 600 Ice Pump

Provides up to 600 lbs. of fresh ice in a day from your ships water tank.

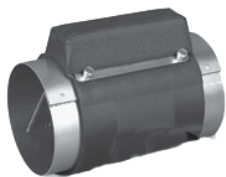


MARINE AIR SYSTEMS®  
**AIRRRRRRRRR**  
by Dometic GROUP



# STINKY BOAT?

We Have **NEW** Breathe Easy Air Purifiers



KOHLER.



- Generators -

**Fischer Panda**

Onan

2124 Renard Ct. • Annapolis, MD  
(410) 224-0970 • (410) 974-6136 • Fax (410) 224-0050  
[www.annapoliscruisair.com](http://www.annapoliscruisair.com)

**X MIDLANTIC**  
**X MARINE**  
**— CENTER**  
**302-436-BOAT (2628)**

*Closed Sunday & Monday*  
*Tuesday-Friday 8AM-4:30PM*  
*Saturday 8AM-4PM*  
 36624 DuPont Boulevard Selbyville, DE  
[www.midlanticmarinecenter.com](http://www.midlanticmarinecenter.com)

# PRE-OWNED SPECIALS!



2011 Aqua Patio 220,  
 Yamaha F150 4-stroke  
 Selling for \$25,993



2000 Crest Family  
 Fisherman 22, 2014 Yamaha  
 F115 4-stroke • **Only \$13,995**



2015 Crest II 210 Pontoon,  
 Mercury 90 4-stroke  
**Only \$22,995**



2007 Starcraft Limited  
**2000 OB** • Mercury 115 ELPT  
 4-stroke • Selling for \$11,495



2017 Harris Cruiser 220  
 Mercury 150hp 4-stroke  
 Listed for \$29,900



2022 Berkshire 24 CL LE  
 Pontoon, Mercury 90 CT  
 4-Stroke • **Only \$37,778**



**2021 Sweetwater 2086,**  
 Suzuki DF70 4-stroke, 30 hours  
**Only \$26,995**



2022 Starcraft Stealth  
**166 SC** • Yamaha F70LA 4-stroke  
**Selling for \$28,902**



**2016 Starcraft Limited**  
**1915 OB,** Mercury 115hp  
 4-stroke • **Only \$21,950**



2007 Starcraft Limited 1915  
**OB,** Mercury 115 Optimax, 2017  
 5-Starr alum trailer • **Only \$15,690**



**2019 Starweld 16 Fusion SC**  
 Pro, Mercury 90hp 4-stroke,  
 with trailer • **Only \$21,950**



**1998 Wellcraft Scarab 302**  
 T/Mercury 225 EFI  
**Listed for \$29,798**

We Are Also A Dealer For  
**STARCRAFT**  
 Pontoon and Deck Boats



# ADVERTISERS INDEX

ALMARS.....	9	KENNERSLEY POINT MARINA.....	13
ANCHOR BOATS.....	24	LIST YOUR BOAT.....	17
ANNAPOLIS CRUISAIR.....	14	MIDLNATIC MARINE.....	15
ATC AUTO/MARINE TRAINING.....	6	PARISH CREEK LANDING.....	4
BOAT LIFTS UNLIMITED.....	16	PERSIMMON POINT.....	6
BOAT US.....	12	RT 113 BOAT SALES.....	7
CLARKS LANDING.....	10	RUDY MARINE.....	11
CURTIS STOKES.....	8, 21	SCOTT'S COVE MARINA.....	2
DANNY'S MARINE.....	5	UPPER CHESAPEAKE YACHT SALES..	3
GOLDSBOROUGH'S MARINE.....	4	UTSCH'S YACHT SALES.....	20
GOOTEE'S MARINE.....	5	WATERFRONT.....	23
J.J. BEST BANC & CO.....	22	YACHTX.....	15

## THE LARGEST LOW PROFILE BOAT LIFT MANUFACTURER IN THE USA

**CALL US FOR YOUR LOCAL DEALER!**



### Choose The Right Boat Lift, Choose

- Low Profile Design • Low Maintenance • 2/5 Yr Warr.
- Outside Walkway • Galvanized Steel Construction
- Aluminum Cradles Available • Capacity 800-40,000 lbs. [www.magnumlift.com](http://www.magnumlift.com)

**MAGNUM**  
**BOAT LIFTS**  
 Personal Watercraft Lifts

Fully Insured

**BOAT LIFTS UNLIMITED**  
**410-674-3100 • 1-800-268-5911**

**WE SERVICE MOST MAKES OF BOAT LIFTS!**

Located in Odenton, MD, this full-service boat lift manufacturer has a network of over 180 distributors serving the Chesapeake Bay, Great Lakes and Atlantic Coast with Magnum Boat Lifting Products. Boat Lifts Unlimited is dedicated to customer satisfaction through prompt, courteous service on most existing boat lifts and timely installation of new boat lifts. Quality materials, attention to detail and innovative design have made Boat Lifts Unlimited one of the largest boat lift manufacturers in the U.S.



# FREE LISTING WITH PHOTO ON THE INTERNET

### PRIVATE AD RATES

- INTERNET ONLY UP TO 1 YEAR..... \$49<sup>00</sup>
- 3 ISSUES NO PHOTO CLASSIFIED..... \$59<sup>00</sup>
- 3 ISSUES WITH COLOR PHOTO WITH COLOR PHOTO ON INTERNET..... \$69<sup>00</sup>
- INTERNET FEATURE ADD ON 4 WEEKS AVAILABLE WITH AD PURCHASE ONLY! ON THE SALTY DOG HOME PAGE ..... \$49<sup>00</sup>
- FRONT COVER..... \$40<sup>00</sup>
- FACEBOOK FEATURE ..... \$15<sup>00</sup>
- PUBLICATION MAILED TO YOU.....\$2<sup>00</sup>

TOTAL \_\_\_\_\_

FRONT COVERS ARE BASED ON AVAILABILITY

- CHECK     MONEY ORDER     DISCOVER
- MASTERCARD     VISA     AMERICAN EXPRESS

CC# \_\_\_\_\_

Expiration Date \_\_\_\_\_ Security Code \_\_\_\_\_

Advertiser's Name .....

Address .....

Phone .....

Where did you pickup "The Salty Dog"?

Store \_\_\_\_\_ Town \_\_\_\_\_

Fill out the description form below, **up to 125 characters (including spaces & punctuation) of advertising.** Please put one character per space beginning with the motor. Include a check, money order or credit card, and mail to us with a good quality COLOR photograph of your boat. Photos will only be returned if accompanied by a self-addressed stamped envelope.

### AD COPY

FT. \_\_\_\_\_ YR. \_\_\_\_\_

MANUF. / MODEL \_\_\_\_\_

MOTOR \_\_\_\_\_

ACCESSORIES \_\_\_\_\_

LOCATION OF BOAT \_\_\_\_\_, \_\_\_\_\_  
City State Zip Code

PRICE \_\_\_\_\_

PHONE # \_\_\_\_\_

EMAIL \_\_\_\_\_

**Send to: The Salty Dog  
254 Brick Blvd • Suite 1  
Brick, NJ 08723**

## 888-843-1585

Fax (732) 477-9000 • Email: [info@thesaltydog.com](mailto:info@thesaltydog.com)

No refunds after Ad is processed. • Advertiser will be responsible for \$20 fee on returned checks.

**YOUR BOAT LISTING CAN ALSO BE SUBMITTED ON THE INTERNET [www.thesaltydog.com](http://www.thesaltydog.com)**

## SPECIAL FEATURES

## PRIVATE BOAT ADS .....Pgs. 19-20

### SUBSCRIPTION CHESAPEAKE BAY

SALTY DOG is published Bi-weekly 25 times a year. Papers are mailed **FIRST CLASS**. Your first issue will be mailed within 1 week. To subscribe, just fill in the amount of issues and multiply by \$2.00\*

No. of issues \_\_\_\_\_ x \$2.00\* = Total Cost \_\_\_\_\_

- CHECK     MONEY ORDER     MASTERCARD     VISA

Credit Card No. \_\_\_\_\_

Exp. Date \_\_\_\_\_

Signature \_\_\_\_\_

Name \_\_\_\_\_

Address \_\_\_\_\_

City \_\_\_\_\_ State \_\_\_\_\_ Zip \_\_\_\_\_

Telephone \_\_\_\_\_

\*Canada Subscription Add 10% - Bermuda Subscription Add 30%  
Outside the Continental USA Add 50% • Credit Cards Only Outside USA



Mail To: THE SALTY DOG, 254 Brick Blvd • Suite 1, Brick, NJ 08723



A Bi-weekly Publication for Powerboats, Sailboats, Marine Equipment, Supplies, Services, Waterfront and Photo Ads

For More Info on Display Ads or Internet Listings  
Call 888-843-1585 • Fax (732) 477-9000  
[info@thesaltydog.com](mailto:info@thesaltydog.com) • Mon.- Fri. 9:00 am to 4:00 pm

# SAVE when you Sell ... and when you Buy



## boaters first™ yachtX.com

The trusted alternative to high cost brokerage and the hassle & risks of FSBO, we make selling your boat easy, safe and produce better outcomes with professional advisors, Web transaction management, escrow and multi-platform marketing - all for just 1.5% or less.

Ask about our buyer representation rebate  
... and YachtX Rewards™ referral program.

boaters saving 85% in selling costs through yachtX.com



boaters receiving thousands in buyer rebates through yachtX.com



# 443.888.9190

"YachtX", "Boaters First", "YachtX Rewards" are trademarks of YachtX, Inc.



See Color Photo on the Internet



46' 2002 AZIMUT FLYBRIDGE, T/Cat 3126B 450hp Dsls, Raymarine elects, new: Fusion stereo, bow sunpads, cushions, Axiom displays, rebuilt turbos, batts, \$269,000, 609-693-9423 tidesendmarina1@gmail.com 158754

See Color Photo on the Internet



30' 2018 WELLCRAFT SCARAB 302, T/Mercury Verado 400Rs, 255 hours, Triple Black, loaded w/electronics & sound system, never fished, lift kept! \$189,900, 917-817-5084 info@deepwaterlanding.com 1587631

See Color Photo on the Internet



28' 2004 GRADY-WHITE 283 RELEASE, T/225hp Yamaha 4-strokes (exhaust kits done), elects, head, loaded, \$74,900, 917-817-5084 info@deepwaterlanding.com 158666

See Color Photo on the Internet



43' 2017 Everglades Boats 435 CC, Quad 300hp Yamaha 4-strokes, full tower, loaded w/electronics, well maint'd, \$499,000, 631-327-0843 stoneharboryachts@gmail.com 158335

See Color Photo on the Internet



30' 1981 TROJAN F30, Chrysler 318 (2), 400 hours on repower, A/C and heat, GPS, depth/fish finder, radar, VHF, sleep 6, micro, stove/oven. Bimini damaged in storm, \$11,900, 609-410-2470 vspmail@comcast.net 158765

See Color Photo on the Internet



28' 2005 GRADY-WHITE 282 Yamaha 4-stroke \$69,500, 908-489-5098

154794

See Color Photo on the Internet



40' 2007 FORMULA 400 SS, under 300 orig hrs on its T/ DIESEL Volvo Penta D6-350s - extremely clean, very rare, factory hardtop, tons up upgrades, \$264,000, 609-693-9423 tidesendmarina1@gmail.com 158755

See Color Photo on the Internet



29' 2007 Everglades Boats 29 CENTER CONSOLE, T/Honda 225hp 4-stroke, new OEM blacks replaced in '22, 650 hrs, CP, FF, GPS w/radar, lean bar w/T-Tab, windlass, head, hard, 609-927-5900 robert@somerspointmarina.com 158415

See Color Photo on the Internet



28' 2006 SEA RAY 280 SUNDANCER, T/4.3L Mercs, full cover, camper cover, sleeps 6, full head & galley, \$48,900, 917-817-5084 info@deepwaterlanding.com 157632

See Color Photo on the Internet



38' 2006 SEA RAY 38 SUNDANCER, Twin 8.1S Mercruiser 370 I/O, 320 hours, Kohler gen, side power bow thruster, \$199,000, 732-899-8010 sales@schraderyachts.com 157963

See Color Photo on the Internet



28' 2019 GRADY-WHITE 285 fully loaded, sunshade, joystick & more, perfect condition! \$249,800, 908-489-5098

See Color Photo on the Internet



28' 2006 MAKO 282 only 130 hours, \$20K in upgrades in 2021 908-489-5098

154795

See Color Photo on the Internet



38' 1999 UNIFLITE SPORTFISH, 671 Detroit Dsls, low hours rebuild, 13.9' beam, purchased in '99, All Offers Considered, 701-839-5411 lyle.w.dallman@gmail.com 158823

See Color Photo on the Internet



28' 2021 Tidewater ADVENTURE CC, T/Yamaha F250, approx 62 hrs, Joystick, 1 Garmin 10" XHD radar, structure scan, ORs, windlass, \$204,900, 732-899-8010 sales@schraderyachts.com 158170

See Color Photo on the Internet



27' 2019 CHRIS CRAFT CATALINA 27 HERITAGE, Trim Edition, T/Yamaha F200hp, approx 245 hrs, Blue Crystal Metallic hull, \$195,000, 732-899-8010 sales@schraderyachts.com 158413

See Color Photo on the Internet



36' 2002 SPECTRE CAT, Twin 500hp Mercruisers, low hours, extremely well kept, immaculate condition, trailer included, \$80,000 FIRM!, 732-864-6937 jeremypeters2002@gmail.com 153768

See Color Photo on the Internet



28' 2014 CHRIS CRAFT 28 LAUNCH, T/Mercruiser 350 Mag DTS, FWC, 285 hours, Midnight Blue hull, \$149,000, 732-899-8010 sales@schraderyachts.com 158414

See Color Photo on the Internet



27' 2018 SEA CHASER CC, T/200hp Suzukis, lift kept (no bottom paint), loaded, 125 hours, \$109,900, 917-817-5084 info@deepwaterlanding.com 158169

See Color Photo on the Internet



27' 2017 DEFIANCE 270 ADMIRAL, T/Honda 225hp, 235 hrs, t-tabs, cooler boxes/livewells, rocket launchers, RWWD, ORs, elects, 917-817-5084 info@deepwaterlanding.com 158665

See Color Photo on the Internet



24' 2004 CHAPARRAL SIGNATURE, 5.0L Volvo Penta, 360 hours, FF, GPS, well cared for & it shows, in water for test drive, \$24,000 MAKE OFFER, 609-287-2283 bhow127@aol.com 156446

See Color Photo on the Internet



22' 2016 BOSTON WHALER 220 OUTRAGE VERY RARE, T/150hp Mercury Verados, 157 hrs, dual Raymarine screens, loaded, head, t-top, good elects, trailer, one owner, \$112,900, 917-817-5084 info@deepwaterlanding.com 156842

See Color Photo on the Internet



26' 2012 CHAPARRAL 264 SUNESTA, Merc 350 Mag, sporty & functional, vacuflush head & sink, manifolds & risers recently installed, brand new trailer, \$55,000, 609-693-9423 tidesendmarina1@gmail.com 158756

See Color Photo on the Internet



24' 2001 WELLCRAFT CUDDY CABIN, repowered in '16 with a Honda BF250AXA 4-stroke OB, only 473 hrs on motor, Garmin elects, trailer, 609-927-5900 robert@somerspointmarina.com 158690

See Color Photo on the Internet



21' 1976 BOSTON WHALER OUTRAGE, 1996 150hp Johnson Ocean Runner, professionally restored, turn key, ready to go!, \$19,500, 732-270-0022 nelsonmarinebasin@comcast.net 157989

See Color Photo on the Internet



26' 1984 ROBALO 260, Twin Merc 200hp 4-strokes, All original boat, Ez loader trailer, Full Tuna Tower with steer station, \$10,000, 443-790-8883 Watts1030@aol.com 158693

See Color Photo on the Internet



23' 2022 AQUASPORT 2300, DF300AP Suzuki 300hp, with only 46 hrs of run time. Fresh and raw water.. stereo with sub and amp. 12" simrad., \$90,000, 410-810-1616 jjracing29@yahoo.com 158752

See Color Photo on the Internet



20' 1983 CUSTOM BUILT MINI TUGBOAT, 20hp Diesel Yanmar, keep cooled, dry stack exhaust, includes trailer, in water, JUST REDUCED! \$10,999, 609-519-3583 harborni@yahoo.com 157105

See Color Photo on the Internet



25' 2020 STEIGER CRAFT 25DV MIAMI 150 hours mint \$149,500, 908-489-5098

154790

See Color Photo on the Internet



23' 2008 SUGAR SAND OASIS AIRWAVE, 250hp Opti Jet Drive, tower, bimini, snap in carpet, table, full cover, new wear ring & SS impeller ('21), 280 hrs, fast boat, \$15,995, 908-309-4016 almarmarine1@gmail.com 156290

See Color Photo on the Internet



18' 2001 BOW RIDER BOWRIDER, Merc 4.3L V6, new manifolds & risers, new thermostat, runs great, \$9,000, 908-868-6026 reeldeelusa@verizon.net 158718

See Color Photo on the Internet



25' 2007 PARKER 2501 DEEP V, T/Yamaha F150, Garmin elects, Taco ORs, Load Rite D/A trailer, \$73,000, 732-899-8010 sales@schradyachts.com 158757

See Color Photo on the Internet



23' 2000 GRADY-WHITE GULFSTREAM, project boat for right buyer, currently 150hp Evinrude Ficht - need work, new cushions, encl for hardtop, down riggers, offer as discount AS IS WHERE ISI, \$14,995, 609-927-5900 robert@somerspointmarina.com 158811

See Color Photo on the Internet



2021 Highfield CL290 ORCA/CSM, Never registered or used. Purchasd 9/21. Stored indoors. Call for Price 609-425-1356 Brockdrussell@gmail.com

158749

See Color Photo on the Internet



25' 2008 CHAPARRAL 256 SSI, Volvo I/O, new transom assembly, 165 original hours, ready to go! MAKE OFFER! \$33,900, 917-817-5084 info@deepwaterlanding.com 155615

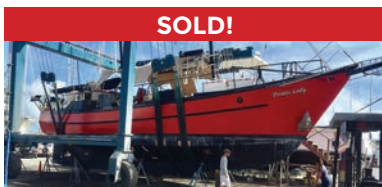
See Color Photo on the Internet



23' 2001 CONTENDER CC, New T/Honda 150IST w/5yr warr, new: steering, Garmin w/18" radar, interior, paint, stereo/speakers, Eisenglass, trl, turn key, 917-817-5084 info@deepwaterlanding.com 158664



Worldwide Yacht Sales | Yacht Charters | New Yacht Construction



**SOLD!**

72' Trade Rover



**SOLD!**

50' Chris-Craft



**SOLD!**

48' Evans Boats



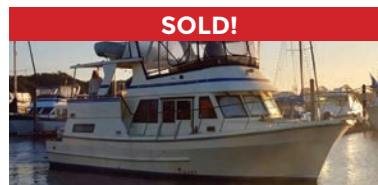
**SOLD!**

44' DeFever



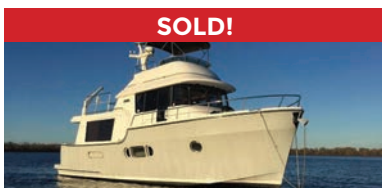
**SOLD!**

44' Gulfstar



**SOLD!**

42' Fu Hwa



**SOLD!**

40' Fathom



**SOLD!**

40' Hinckley



**SOLD!**

36' C&C



**SOLD!**

36' Bristol



**SOLD!**

32' Eagle



**SOLD!**

26' Sisu

List your boat with us and join our **SOLD** list!

To see more details about these and all other yachts around the globe, please visit our website below.

Annapolis, MD • St. Michaels, MD • Delaware City, DE • Deltaville, VA • Woodbridge, VA  
Telephone: 410.919.4900 • Email: info@curtisstokes.net

[www.curtisstokes.net](http://www.curtisstokes.net)



**OWN the BOAT.  
OWN the SEA.**



For low rates, long terms, repower loans and to finance boats of **any age**, choose BEST



**CALL a LOAN OFFICER NOW**  
**1-800-USA-1965 ext 2**



**or APPLY in JUST 5 MINUTES**  
**JJBestBoatLoans.com**



Subject to consumer loan program requirements and credit approval. Certain fees, closing costs and restrictions may apply. Minimum loan amount for pleasure use is \$10,000 in all states. J.J. Best & Company operates under the name J.J. Best Banc and Company and J.J. Best Bank and Company.



# WATERFRONT MARINE

#1 GOLL AVE, SOMERS POINT, NJ ~ 609-926-1700

281 PRINCETON AVE, BRICK, NJ ~ *Featuring Chaparral* ~ 732-202-6961

2822 SOLOMON'S ISLAND RD, EDGEWATER, MD ~ 443-949-9041

Premium Brands ~ Exceptional Service

[WWW.WATERFRONTMARINE.COM](http://WWW.WATERFRONTMARINE.COM)

**BOATS AVAILABLE IN STOCK & PRODUCTION SLOTS AVAILABLE TO CUSTOMIZE!**



## - PREOWNED BOATS -



Located in Somers Point

22' '16 Robalo R227 DC  
Yamaha F200 • \$59,900



Located in Somers Point

2021 25 Bennington 25QX  
250hp Yamaha V-Max,  
loaded • \$159,900



Located in Somers Point

2020 Robalo R230  
Yamaha VF250 • \$85,900

## 2022 Contender 44 ST



Factory Demo!

Triple Yamaha 425 XTO's, electronics,  
Sea Keeper, loaded w/options &  
features, new warranties,  
Available for Immediate Delivery!

**Call Today for Pricing!**

### BOWRIDERS & PONTOONS

30' '22 Chaparral 300 OSX, T/Yamaha F300, Joystick docking.....	\$279,900
30' '19 Chaparral 300 OSX, Twin Yamaha F300.....	\$219,000
30' '14 Chaparral 307 SSX, T/Volvo Penta 300DP, joystick .....	Pending
28' '21 Chaparral 280 OSX, T/Yamaha F200.....	\$179,900
27' '07 Chaparral 276 SSI, Volvo Penta 8.1 GI DP .....	\$66,900
26' '21 Chaparral 267 SSX, Volvo Penta 350 DP.....	\$114,900
26' '13 Sea Ray 260 Sundeck, Merc 350 Mag 300hp Bill .....	Pending
26' '19 Chaparral 264 Sunesta, Volvo Penta 350 DP.....	Pending
26' '14 Chaparral 264 Sunesta, Volvo Penta 320DP, 62 hrs .....	Pending
25' '21 Bennington 25QXFBWA, Yamaha F250.....	\$159,900
25' '16 Chaparral 250 Suncoast, Yamaha F300, lift kept .....	\$72,500
24' '21 Bennington 24 SSR, Yamaha F150 motor .....	\$49,800
24' '11 Chaparral 246 SSI, Volvo Penta 5.7L GI 300 DP.....	Pending
24' '19 Chaparral 244 Sunesta, Volvo Penta 300 DP.....	\$69,900
22' '21 Bennington 22LSRD, Yamaha F150.....	\$59,900
22' '18 Crest Tritoon, Yamaha F115 .....	\$33,900
22' '22 Monterey M225, Mercury 225hp.....	\$59,900
21' '19 Chaparral OB 21 H2O Sport, Yamaha F150 .....	Pending
20' '17 Regal 2000 ES Bowrider, Volvo Penta, 40 hours.....	Pending

### FISHING BOATS

36' '22 Robalo R360 CC, Triple Yamaha F300, lift kept .....	\$597,000
31' '22 Robalo R317, T/Yamaha F300, Joystick docking .....	\$289,900
24' '18 Robalo R242 CC, Yamaha F300 .....	\$89,900
22' '16 Robalo R227, Yamaha F200.....	\$59,900
22' '16 Robalo R222 CC, repowered Yamaha VF250, 40 hrs, trl.....	SOLD
20' '18 Robalo R200, Yamaha F150.....	\$54,900
20' '18 Robalo R207 DC, Yamaha F150 .....	Pending
18' '18 Bayliner Element CC, Mercury 115hp, trailer.....	\$24,900
13' '14 Boston Whaler Super Sport, Merc 40hp.....	\$16,900

### CRUISERS & CUDDY CABINS

52' '08 Sea Ray 52 Sedan Bridge, T/QSM-11 Cummins Dsl.....	\$536,900
27' '19 Chaparral 270 Signature, Volvo Penta V8 300 DP, gen .....	\$114,900
23' '11 Crownline 236SC, Merc 350 Mag Bill, Loadrite galv roller trl....	\$27,900

### PERSONAL WATERCRAFT

2016 Sea Doo GTR 215, w/trailer .....	\$9,500
---------------------------------------	---------



AUTHORIZED  
PARTS &  
SERVICE



# NOW IS THE TIME TO BUY!

**OPEN 7 DAYS A WEEK**



**FOUR WINNS**



**KW KEY WEST**



**Scout**  
Discover More...



Great Selection of  
Pontoons In Stock!  
Call for Info!



**G3 Boats**



Need a Trailer?  
We Have Them  
In Stock!

**YAMAHA BUILT TO LAST**

**410.287.8280**

**ANCHOR BOATS**  
North East, Maryland

[www.AnchorBoat.com](http://www.AnchorBoat.com)

448 MAULDIN AVE | NORTH EAST, MD 21901

**Parts & Service**  
**General Boat Repairs**  
**High & Dry Boat Storage**