

Free!



The

The Salty Dog



CHESAPEAKE BAY EDITION

Published Every Other Week • Distributed in Maryland, Delaware, Southern Pennsylvania and Virginia

POWERBOATS & SAILBOATS ...Including Marine Services



JEANNEAU 12.5 Leader

Largest Inventory of In Stock Boats in the Region!
302-945-2254
www.RudyMarine.com



Bentley Elite

Largest Inventory of In Stock Pontoon in the Region!
302-945-2254
www.RudyMarine.com



SunChaser Eclipse

Largest Inventory of In Stock Pontoon in the Region!
302-945-2254
www.RudyMarine.com



29' 1992 SEA RAY SUNDANCER, Twin 4.3L V6, beautiful inside & out, all new vinyl, sleeps 6, micro, fridge, pumpout head, AC/HT, port engine new last yr, boat is in water, \$18,000 OBO, 267-640-1156, Burnslej1428@gmail.com 155723

List Your Boat As Low As \$49!
Go to www.thesaltydog.com to get started!
Private Boat Ads Only



26' 1984 ROBALO 260 CC, T/Merc 200hp 2-stroke, Estate Sale, ONE OWNER BOAT, all original boat, EZ loader trailer full tuna tower with steer station, Rupp outriggers, extras, \$10,000, 443-790-8883, Watts1030@aol.com 158693



33' 1985 TROJAN 10M FB SEDAN, T/350 gas IB, gen, AC, island berth, salon w/sofa, dinette, hardtop, ORs, platform, elecs, in water w/systems activated, ready to fish offshore or extended cruising, \$17,850, 443-553-3982, jmswoody@yahoo.com 158739



22' 2022 SAILFISH 220 CC, Dealer's personal boat for '22 summer, 150hp Mercury 4-stroke w/approx 50 hrs, kept & used in fresh water, bottom painted, fresh coat of wax & stored indoors, \$79,400, 443-553-3982, jmswoody@yahoo.com 158395



41'5" 1999 BAYLINER 4087, original 77 hours on her, 3 SRs, while the owner's aft cabin is surprisingly comfortable and includes a walkaround double berth, vanity, private head with separate stall shower, \$77,000, 410-474-2377, larryreich159@aol.com 158772

Annapolis, MD • St. Michaels, MD
Deltaville, VA • Woodbridge, VA
Delaware City, DE

CONTACT US TODAY!
info@curtisstokes.net
410.919.4900



www.curtisstokes.net

1-888-843-1585 • Private Boat Information on Page 18



410-784-7624

10551 Eldon Willing Rd
Chance, MD 21821

bobbykemp@scottscovemarina.com



TOHATSU



75HP

90HP

115HP

Upper Chesapeake Yacht Sales

John Curry • (610) 299-3598
www.upperchesapeakeyachtsales.com



**33' '18
Regal BR
\$229,900**

Mint condition! Upper Bay fresh water luxury bowrider with AC sleeping area, genset, electric grill and full canvas. Efficient Volvo dual prop drives with joystick control system. No bottom paint. Must see! Venture 12,500# aluminum trailer available at extra cost.



37' '05 Cruisers 370 Express,
T/315hp Yanmar Dsls, gen, AC,
new canvas, mint • **\$159,900**



34' '84 Silverton FB Conv, T/270hp,
gen, AC, very nice • **\$17,900**



34' '05 Rinker 342 Fiesta Vee,
350 MPI FWC Horizons,
super clean, • **\$69,900**



33' '92 Sea Ray Sundancer
T/5.7L Merc V-Drives, gen, AC
• **\$24,900**



32' '05 Sea Ray Sundancer,
T/320hp Mercruiser V-Drive, gen,
AC • **\$89,900**



27' '98 Mariah Bowrider
330hp Merc • **\$5,900**



26' '86 Pacemaker FB Cruiser
New 350hp Merc, very nice
• **\$9,995**



26' '03 Crownline 262 CR
300hp • **\$20,900**

36' '85 Sea Ray Aft Cabin, T/260hp, gen, AC \$19,900



Expect The Same Superior Service From Our Brokerage That You Get From Our Marina

BOAT SALES & BROKERAGE
 • Financing & Insurance Available •
WORTON CREEK MARINA
 23145 Buck Neck Road • Chestertown, MD 21620
(410) 778-3282

CALL TO RESERVE YOUR 2023 SLIP OR RACK SPOT

Best and Fastest Access to the Bay

- 100+ Wet Slips
- 70+ Rack Boatel
- 50+ Outdoor Racks
- Trailer Parking
- High Speed Wireless
- New Bathrooms w/Showers



"WE WANT TO BE YOUR BOAT'S HOME!"

CALL FOR OUR SPECIALS!

4819 Woods Wharf Road
Shady Side, MD 20764

410.867.4800
parishcreeklanding.com

YEAR ROUND
SLIPS • BOATEL SERVICE
Direct Access to the Bay



GOLDSBOROUGH'S MARINE



709 W. Main St.,
Crisfield, Maryland
Ph.# 410-968-0852
Email:
merc71@verizon.net

"Where Happiness Is Just A Boat Ride Away"
www.crisfield.com/gold



25' C-Hawk CC
Yamaha VF200XB
V Max, t-top & #7
console upgrade,
cleats, forward fish
boxes w/cushions,
lughing pkg w/5
Starr alum trl
\$73,340



Lowe FM 177 SC • Mercury 90hp ELPT 4-stroke with
4 fold down pedestal seats upgrade, Jensen stereo w/4 speaker
system, Lowe LB 2400-74 Swing Tongue trl • **\$33,695**



19' Lookout
Skiff Bay 19
Yamaha 115hp
(F115XB),
w/lighting kit &
Garmin EchoMap,
stereo system,
EZ Loader A96BS
16-18 2450 alum trl
\$40,995



Yamaha
F70LA
w/hook-up
kit, controls,
prop and
tach
\$9,695



Mercury
150 XL
ProXS
w/hook-up
kit, controls,
prop and
tach
\$15,095



23 Ultra



24 HFC



Powered by:



DANNY'S MARINE
(410) 228-0234 • www.dannysmarine.com
 Located on US Rt 50 (mile marker 86) • Chateau Drive near Linkwood, MD
 dannysmarine@comcast.net

Limited Time Offers. Not all models qualify. See Participating Suzuki Marine dealer for details or visit www.suzukimarine.com
 ©2020 Suzuki Motor of America, Inc.

Fishin' Boats From
 Fishin' Folks

SUMMER SAVINGS!



2022 Key West Boats 263 FS -
 Yamaha Engine, Center Console



2005 HydraSports 3300CC
 Vector Tower - 2018 Suzuki DF350



2005 HydraSports 3300VX Vector
 Express - Yamaha XF425



2021 Key West Boats 263 FS -
 Yamaha F200XCA



2000 HydraSports 2596CC /
 2600CC Vector - 2016 Yamaha
 F200XCA



2000 HydraSports 2800CC
 Vector - 2007 Suzuki DF300

GOOTEE'S MARINE

South of Cambridge On Maryland's Eastern Shore
 1439 Hooper's Island Road, Church Creek, Maryland



800-792-0082

Gootees.com



410-571-0045

2830 Solomons Island Road
Edgewater, MD 21037

ppmmarine@aol.com



**NEW MOTORS IN STOCK
AND READY TO GO!**



**MerCruiser
350 Mag**



**MerCruiser
383 FWC**

**Call for Pricing and Details on our Used Engines!*

Other Services Offered:

*Marine Engine & Sterndrive Repair • Mercury Outboard Service, Optimax & Verado
Dealer for Mercury, MerCruiser, Volvo Penta & Indmar*

MARINE TECHNICIAN TRAINING

RIDE THE CREST
to CAREER SUCCESS



**ENROLL FOR TRAINING TO BECOME A PROFESSIONAL
MARINE SERVICE TECHNICIAN**

Our in-depth program includes training in: Seamanship, AC & DC Electrical, ABYC Standards, Air Conditioning & Refrigeration, Mechanical Systems, Stern Drives/Transmissions, Computerized-Fuel Injected Inboard and Outboard Engines, Inboard, Outboard and I/O Systems, Electronic Diesel Engines (*Cummins QSB 5.9 380 HP Common Rail Trainer*), Fiberglass & Gelcoat Repair, Plumbing and Sanitation Systems.

Financial Aid for those who Qualify • Career Placement Assistance



CALL NOW 866-656-7794

www.autotraining.edu

900 Johnsville Blvd., Warminster, PA 18974

Supported by



with Training Materials & Equipment

For required program disclosure information, please go to www.autotraining.edu/consumerinformation.

TAX FREE

Rt. 113 Boat Sales and Service



Rt113BoatSales.net



**Now through July 15
BIG DEALER DISCOUNTS
& FACTORY REBATES!**



YAMAHA SERVICE
MASTER YAMAHA TECHNICIAN ON STAFF



P PURSUIT UNRELENTING PERFORMANCE THAT IS BUILT WITH INTEGRITY AND A REFINEMENT BEYOND COMPARE



COBIA Quality is More Affordable Than You Think From 22 - 35 Ft.



PATHFINDER Angler Driven and #1 for a Reason From 22 - 27 ft.



BROKERED BOATS WANTED!

CLEAN, LATE MODELS UP TO 35 FT.
LOW FEES WITH
GREAT RESULTS!



SERVICING
Ocean City
and
Indian River
Marinas

MOBILE SERVICE UNITS

AVAILABLE BROKERED BOATS

- 2022 Cobia 330 DC Whisper Gray Twin XF425s \$325,000 **SOLD**
- 2022 Cobia 320 CC Azul Blue Twin XF425s \$299,999
- 2022 Cobia 280 DC Atlantic Blue Twin F250 \$235,000 **SOLD**
- 2018 Cobia 261 CC Anthracite Gray Twin F150 \$99,999 **SOLD**
- 2015 Contender 25 Bay Gray F300 \$87,500
- 2017 Pathfinder 2500 Hybrid Atlantic Blue F300 \$97,500 **SOLD**
- 2018 Pathfinder 2200 TRS Blue/White F200 \$69,999
- 2007 Triumph 215 CC White F150 \$24,999 **SOLD**
- 2017 Tidewater 230 CC \$63,500
- 2015 Contender 25 Bay \$87,500
- 2007 Triumph 235 CC \$34,999

In Stock & Incoming!

- | | |
|----------------------|--------------|
| Pursuit DC246 | Cobia 220 CC |
| Pursuit DC266 | Cobia 220 CC |
| Pursuit S288 | Cobia 220 CC |
| Pursuit S288 | Cobia 240 CC |
| Pursuit DC326 | Cobia 240 CC |
| Pursuit DC326 | Cobia 240 CC |
| Pursuit S428 | Cobia 262 CC |
| Pathfinder 2200 TRS | Cobia 262 CC |
| Pathfinder 2200 TRS | Cobia 262 CC |
| Pathfinder 2400 TRS | Cobia 262 CC |
| Pathfinder 2400 TRS | Cobia 280 CC |
| Pathfinder 2400 TRS | Cobia 280 CC |
| Pathfinder 2400 TRS | Cobia 301 CC |
| Pathfinder 2600 TRS | Cobia 320 CC |
| Pathfinder 2700 OPEN | Cobia 350 CC |

GARMIN
Certified Installer

JL AUDIO

10% OFF
ALL IN STOCK ITEMS THROUGH MAY 31

RT113 BoatSales.net • 52 Cemetery Rd. Selbyville, DE 302.436.1737

CurtisStokes.net

THE BEST WEBSITE TO SEARCH
FOR YOUR NEW YACHT OR BOAT!



Worldwide Yacht Sales | Yacht Charters

1.855.266.5676 | 954.684.0218 | info@curtisstokes.net

ALMARS

**PLEASE CALL FOR UPDATES!
Motors Are Slowly Arriving!**

*We Are A Full Service, Premier Mercury Outboard
Repair Center! Let Our Certified Mercury Technicians
Service Your Mercury Motor Needs!*

**MOST CONFIGURATIONS
IN STOCK NOW
2.5HP-200HP!**

**Call for Compatibility
and Complete Inventory!**

ATTENTION!

WE NOW HAVE A FEW 200'S!

**WE NOW HAVE A FEW V-10
350'S!**

**WE HAVE A FEW LEFTOVER
VERADO L-6 350'S & 400'S!**

**Call now for Details!
Limited Quantities!**



**2.5HP
3.5HP
4HP
5HP**

**6HP
8HP
9.9HP
15HP**

**20HP
25HP
50HP
60HP**

**75HP
115HP
150HP
200HP**



THESE WILL GO FAST!

**CALL
NOW TO
ORDER
YOUR
4-STROKE!**



150
4-stroke
Black



150 ProXS
4-stroke
Black



175XL ProXS
4-stroke
Black



200
Sea Pro
Black



225XL
4-stroke
Black



250 XL
4-stroke
White

**100's of Used Cowllings
In Stock!
Call for Availability!**

We Now Offer
INJECTOR SERVICE
with ONE Day Turnaround

REMANUFACTURED OUTBOARD ENGINE SALE!

90hp - 250hp 1 Full Year Warranty

Starting As Low As \$5,495 Call for Details!

**CALL US
FOR GREAT
DEALS ON
NON-CURRENT
POWERHEADS!**

**CALL JACK FOR MOST
CURRENT INVENTORY & PRICING!**

701 Washington St., New Castle, DE

302-328-8541

www.almarsoutboards.net

HOURS: Monday - Friday: 8am - 5pm
CALL FOR GREAT PRICING ON NEW
& USED MERCURY OUTBOARDS

NO HIDDEN COSTS
NOT RESPONSIBLE FOR TYPOGRAPHICAL ERRORS



All prices good
while supplies last!

Pricing includes all rebates.

CLARKS LANDING

YACHT SALES

New Dealer For  **NIMBUS**



Tender 11



FREE SLIP WITH PURCHASE
Call for Details

Factory Direct Pricing

SOLARA

Cutwater's New Premium Brand!



25 Centerwalk



25 Dual Console
REBATE \$10,000



25 Coupe



31 Centerwalk

FREE SLIP WITH PURCHASE
Call for Details
25 Centerwalk
25 Dual Console
25 Coupe

BENETEAU



Antares 8 • Fish Edition
REBATE \$2,940



Flyer 9 Sundeck
REBATE \$3,780



Swift Trawler 35
REBATE \$17,500

FREE SLIP WITH PURCHASE
Call for Details
Antares 8
Flyer 9
Swift Trawler 35

CLEAR THE DECKS!

Wellcraft®



202 & 222 Fisherman



262 Fisherman



355 Commuter

CLARKS LANDING

YACHT SALES

on the Manasquan River
847 Arnold Avenue
Point Pleasant, NJ

732-899-5559 • www.ClarksLanding.com



IN STOCK NOW

JEANNEAU

High-performance boats with outstanding seaworthy qualities.

Leader 12.5
24'-41'

IN STOCK NOW

895 Sport
24' through 30'

IN STOCK NOW

NC Cruiser 1095
24' - 41'

IN STOCK NOW

Leader 9.0 CC
22' - 35'

IN STOCK NOW

Bentley
PONTOONS

Bentley 22 Elite Pontoon

IN STOCK NOW

SunChaser

Sunchaser Vista 22 Fish Pontoon

RUDY MARINE IS RENOWNED FOR EXPERT ENGINE RIGGING SERVICES



YAMAHA

AVAILABLE YAMAHA OUTBOARD ENGINE MODELS

- | | | | | |
|-----------------|----------------|------------------|---------------------|----------|
| XF425NSB2 (DEC) | VF250XB | VF115LA | F40LA | T9.9XWHB |
| F300XA | F200XCA (DEC) | F115LB | F40LEHA | F9.9SMHB |
| F300UCB (DEC) | LF200XCA (DEC) | F90LB | F250WTHC | F6SHA |
| F300XCB (DEC) | VF175XA | F70LA | E25LWTHC | F4SHA |
| F250XCB (DEC) | F150LB | F60LB | T25LWTC | F2.5SMHB |
| F250XB | VF150XB | T60LB | F9.9LMHB | |

IN STOCK



ZERO DOWN FINANCING AVAILABLE ON ALL MODELS

Rudy Marine.com

Where Family Boating Begins

32606 DUPONT BOULEVARD, DAGSBORO, DE 19939
ONLY MINUTES FROM THE CAPE MAY-LEWES FERRY

302-945-2254

*ALL PREVIOUS PURCHASES ARE EXCLUDED

DEALER INQUIRIES WELCOME

DELAWARE HAS NO SALES TAX!

why get towing? | breakdowns happen



Breakdowns are unpredictable, make them less stressful with an Unlimited Towing Membership from TowBoatU.S. You can relax, we've got your back.



BoatU.S.[®]

JOIN TODAY!
BoatUS.com/Towing

Details of services provided can be found online at BoatUS.com/Agree. TowBoatU.S. is not a rescue service. In an emergency situation, you must contact the Coast Guard or a government agency immediately.

RESERVE YOUR SLIP TODAY!

MARINE REPAIRS & MAINTENANCE
STORAGE
HAULING
POOL ACCESS
EVENTS
LODGING

Call or E-mail:

410-758-2394

info@kennersleypoint.com



KENNERSLEY
POINT MARINA

CHURCH HILL, MARYLAND 410-758-2394

ANNAPOLIS CRUISAIR, INC.

Family Owned & Operated for Over 50 Years

SALES • SERVICE • INSTALLATION



U-LINE
U-Line Icemakers
110/115vAC

We will meet or beat any competitive price quote for these products!



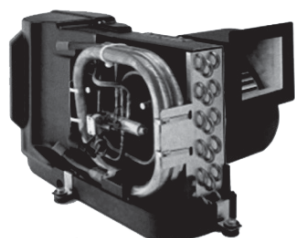
Marine Diesel Heaters



Espar

Cruisair®

New Turbo Air Conditioners • Heat Pumps

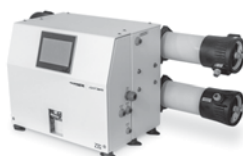


• We Have • BREATHE EASY AIR FILTERS

DOMETIC

SPOTZERO
Fresh Water Reverse Osmosis

Water Purification Systems



Sentry™

Cruisair

BATTERY CHARGERS



SAFEST CHARGER ON THE MARKET!



Vitrifrigo

REFRIGERATORS

WAECO

Adler/Barbour®



Eskimo Ice 600 Ice Pump

Provides up to 600 lbs. of fresh ice in a day from your ships water tank.



MARINE AIR SYSTEMS®
AIRRRRRRRRR
by Dometic GROUP



STINKY BOAT?

We Have **NEW** Breathe Easy Air Purifiers



KOHLER.



- Generators -

Fischer Panda

Onan

2124 Renard Ct. • Annapolis, MD
(410) 224-0970 • (410) 974-6136 • Fax (410) 224-0050
www.annapoliscruisair.com

Boat Dealers & Brokers...

YOUR AD could be HERE

....Reaching out to well over 30,000 interested home owners and prospects!

We're the original
FREE Boating Publication.....
and readers find a new copy on the stands...every other week.

For more information,
call the leader in targeted
boat advertising
Toll Free 1-888-843-1585

EzyTee
and More !
CUSTOM DIGITAL SCREEN PRINTING
PREMIUM LASER ENGRAVING
& EMBROIDERY
410.279.2539 • WWW.EZYTEE.COM
Greenville, NC

"YOUR BOAT NAME"

100% Preshrunk Cotton
Premium 6.1oz T's
Hoodies • Crew Sweatshirts
Print or Embroidered
Plus Hats & More!

**All Work Completed
In-House In Our
North Carolina Shop!
We Are Boaters...
Doing Boater Stuff!**

**VETERAN OWNED
SMALL BUSINESS!**

UTSCH'S YACHT SALES

BETWEEN CANAL AND SCHELLENGER'S LANDING

Rt. 109 & Cape May Canal, Cape May, NJ (609) 884-BOAT (2628)

LICENSED

www.capemayharbor.com

INSURED



35' 1975 Gulfstar Trawler,
T/DsIs • \$9,500



33' 1983 Egg Harbor,
T/V8 gas Crusaders • \$15,900



32' 1993 Carver,
\$7,500



31' 1989 Chris Craft Commander,
T/Crusader V8 454 • \$19,900



28' 1998 Albin,
Cummins Diesels, \$59,900



1997 29' Blackfin,
T/Crusader gas V8s • \$29,900



28' 1995 Bayliner Cruiser,
V8 Mercruiser I/O, \$7,000



23' 2000 Sea Pro CC, '19 Evinrude
E-Tec OB, dual axle trailer • \$26,000

34' 1981 Silverton Convertible.....	AS IS \$2,500	28' 1974 Bertram, T/V8	SOLD
34' 1981 Silverton FB Conv, T/Crusader V8 gas.....	SOLD	28' 2005 Pursuit Walkaround, T/Yamaha 225hp OBs, very clean	SOLD
33' 1994 Carver, T/Crusader V8 gas	\$30,000	25' 1973 Bristol Sloop, 9.9hp outboard	\$1,500
32' 1988 Carver, T/V8 gas	AS IS \$7,900	17' 2002 Aquatron, Merc I/O, trailer	\$6,500
32' 2006 Rinker, T/V8	SOLD	15' Custom Wood Skiff, nice condition.....	SOLD
30' 1985 Century 300 Grande, T/V8 gas inboard.....	AS IS \$3,500	- MISC EQUIPMENT -	
29' 2001 Seamaster Classic, 250hp Mercruiser I/O	\$6,000	Approximately 60 lineal feet of 10' wide concrete,	
28' 2002 Bayliner 2855 Ciera, 350hp Merc I/O.....	\$7,900	Bellingham Marine Floating Docks, very heavy construction .. \$4,000	
28' 1976 Luhrs Flybridge Sedan, Crusader V8.....	\$1,500	1950 Hydraulic Cutterhead Dredge, 471 Detroit Diesel, 6' pump \$29,000	

ADVERTISERS INDEX

ALMARS.....	9	J.J. BEST BANC & CO.....	22
ANCHOR BOATS.....	24	KENNERSELY POINT MARINA.....	13
ANNAPOLIS CRUISAIR.....	14	LIST YOUR BOAT.....	18
ATC AUTO/MARINE TRAINING.....	6	MIDLANTIC MARINE CENTER.....	15
BOAT LIFTS UNLIMITED.....	16	PARISH CREEK LANDING.....	4
BOAT US.....	12	PERSIMMON POINT.....	6
CLARKS LANDING.....	10	RT 113 BOAT SALES.....	7
CURTIS STOKES.....	8, 21	RUDY MARINE.....	11
DANNY'S MARINE.....	5	SCOTT'S COVE MARIA.....	2
DOUR YACHT SALES.....	10	UPPER CHESAPEAKE YACHT SALES..	3
EZYTEE.....	15	UTSCH'S YACHT SALES.....	15
GOLDSBOROUGH'S MARINE.....	4	WATERFRONT.....	23
GOOTEE'S MARINE.....	5	YACHTX.....	17

THE LARGEST LOW PROFILE BOAT LIFT MANUFACTURER IN THE USA

CALL US FOR YOUR LOCAL DEALER!



Choose The Right Boat Lift, Choose

MAGNUM
BOAT LIFTS
Personal Watercraft Lifts

- Low Profile Design • Low Maintenance • 2/5 Yr Warr.
- Outside Walkway • Galvanized Steel Construction
- Aluminum Cradles Available • Capacity 800-40,000 lbs. www.magnumlift.com

Fully Insured

BOAT LIFTS UNLIMITED
410-674-3100 • 1-800-268-5911

WE SERVICE MOST MAKES OF BOAT LIFTS!

Located in Odenton, MD, this full-service boat lift manufacturer has a network of over 180 distributors serving the Chesapeake Bay, Great Lakes and Atlantic Coast with Magnum Boat Lifting Products. Boat Lifts Unlimited is dedicated to customer satisfaction through prompt, courteous service on most existing boat lifts and timely installation of new boat lifts. Quality materials, attention to detail and innovative design have made Boat Lifts Unlimited one of the largest boat lift manufacturers in the U.S.

SAVE when you Sell
... and when you Buy



boaters first™
yachtX.com

The trusted alternative to high cost brokerage and the hassle & risks of FSBO, we make selling your boat easy, safe and produce better outcomes with professional advisors, Web transaction management, escrow and multi-platform marketing - all for just 1.5% or less.

Ask about our buyer representation rebate
... and YachtX Rewards™ referral program.

boaters saving 85% in selling costs through yachtX.com



boaters receiving thousands in buyer rebates through yachtX.com



443.888.9190

"YachtX", "Boaters First", "YachtX Rewards" are trademarks of YachtX, Inc.



FREE LISTING WITH PHOTO ON THE INTERNET

PRIVATE AD RATES

- INTERNET ONLY UP TO 1 YEAR..... \$49⁰⁰
- 3 ISSUES NO PHOTO CLASSIFIED..... \$59⁰⁰
- 3 ISSUES WITH COLOR PHOTO WITH COLOR PHOTO ON INTERNET..... \$69⁰⁰
- INTERNET FEATURE ADD ON 4 WEEKS AVAILABLE WITH AD PURCHASE ONLY! ON THE SALTY DOG HOME PAGE \$49⁰⁰
- FRONT COVER..... \$40⁰⁰
- FACEBOOK FEATURE \$15⁰⁰
- PUBLICATION MAILED TO YOU.....\$2⁰⁰

TOTAL _____

FRONT COVERS ARE BASED ON AVAILABILITY

- CHECK MONEY ORDER DISCOVER
- MASTERCARD VISA AMERICAN EXPRESS

CC# _____

Expiration Date _____ Security Code _____

Advertiser's Name

Address

Phone

Where did you pickup "The Salty Dog"?

Store _____ Town _____

Fill out the description form below, **up to 125 characters (including spaces & punctuation) of advertising.** Please put one character per space beginning with the motor. Include a check, money order or credit card, and mail to us with a good quality COLOR photograph of your boat. Photos will only be returned if accompanied by a self-addressed stamped envelope.

AD COPY

FT. _____ YR. _____

MANUF. / MODEL _____

MOTOR _____

ACCESSORIES _____

LOCATION OF BOAT _____, _____ State _____ Zip Code _____

PRICE _____

PHONE # _____

EMAIL _____

**Send to: The Salty Dog
254 Brick Blvd • Suite 1
Brick, NJ 08723**

888-843-1585

Fax (732) 477-9000 • Email: info@thesaltydog.com

No refunds after Ad is processed. • Advertiser will be responsible for \$20 fee on returned checks.

YOUR BOAT LISTING CAN ALSO BE SUBMITTED ON THE INTERNET www.thesaltydog.com

SPECIAL FEATURES

PRIVATE BOAT ADSPgs. 19-20

SUBSCRIPTION CHESAPEAKE BAY

SALTY DOG is published Bi-weekly 25 times a year. Papers are mailed **FIRST CLASS**. Your first issue will be mailed within 1 week. To subscribe, just fill in the amount of issues and multiply by \$2.00*

No. of issues _____ x \$2.00* = Total Cost _____

- CHECK MONEY ORDER MASTERCARD VISA

Credit Card No. _____

Exp. Date _____

Signature _____

Name _____

Address _____

City _____ State _____ Zip _____

Telephone _____

*Canada Subscription Add 10% - Bermuda Subscription Add 30%
Outside the Continental USA Add 50% • Credit Cards Only Outside USA



Mail To: THE SALTY DOG, 254 Brick Blvd • Suite 1, Brick, NJ 08723



A Bi-weekly Publication for
Powerboats, Sailboats, Marine
Equipment, Supplies, Services,
Waterfront and Photo Ads

For More Info on Display Ads or Internet Listings

Call 888-843-1585 • Fax (732) 477-9000

info@thesaltydog.com • Mon.- Fri. 9:00 am to 4:00 pm

See Color Photo on the Internet



46' 2002 AZIMUT FLYBRIDGE, T/Cat 3126B 450hp Dsls, Raymarine elec's, new: Fusion stereo, bow sunpads, cushions, Axiom displays, rebuilt turbos, batts, **\$269,000, 609-693-9423 tidesendmarina1@gmail.com 158754**

See Color Photo on the Internet



33' 1985 TROJAN 10M FB SEDAN, T/350 gas I/B, gen, AC, island berth, salon w/sofa, dinette, hardtop, ORs, platform, elec's, in water w/systems activated, ready to fish offshore or extended cruising, **\$17,850, 443-553-3982 jmswoody@yahoo.com 158739**

See Color Photo on the Internet



28' 2021 Tidewater ADVENTURE CC, T/Yamaha F250, approx 62 hrs, Joystick, 1 Garmin 10" XHD radar, structure scan, ORs, windlass, **\$204,900, 732-899-8010 sales@schradyachts.com 158170**

See Color Photo on the Internet



43' 2017 Everglades Boats 435 CC, Quad 300hp Yamaha 4-strokes, full tower, loaded w/electronics, well maint'd, **\$499,000, 631-327-0843 stoneharboryachts@gmail.com 158335**

See Color Photo on the Internet



31' 1982 BERTRAM SPORTFISH, custom hardtop, 2002 Cummins 6BTA 270 Diamond Series Dsl, outriggers, **\$115,000, 732-899-8010 sales@schradyachts.com 158894**

See Color Photo on the Internet



28' 2014 CHRIS CRAFT 28 LAUNCH, T/Mercruiser 350 Mag DTS, FWC, 285 hours, Midnight Blue hull, **\$149,000, 732-899-8010 sales@schradyachts.com 158414**

See Color Photo on the Internet



40' 2007 FORMULA 400 SS, under 300 orig hrs on its T/DIESEL Volvo Penta D6-350s - extremely clean, very rare, factory hardtop, tons up upgrades, **\$264,000, 609-693-9423 tidesendmarina1@gmail.com 158755**

See Color Photo on the Internet



31' 1985 WELLCRAFT ST TROPEZ 3200 (2) Crusader 454 cu inches, engines need some TLC, being sold as is, weekend showings **Asking \$3,000 OBO 215-929-5608 dfranc25@gmail.com 158743**

See Color Photo on the Internet



28' 2004 GRADY-WHITE 283 RELEASE, T/225hp Yamaha 4-strokes (exhaust kits done), elec's, head, loaded, **\$74,900, 917-817-5084 info@deepwaterlanding.com 158666**

See Color Photo on the Internet



38' 2006 SEA RAY 38 SUNDANCER, Twin 8.1S Mercruiser 370 I/O, 320 hours, Kohler gen, side power bow thruster, **\$199,000, 732-899-8010 sales@schradyachts.com 157963**

See Color Photo on the Internet



28' 2006 SEA RAY 280 SUNDANCER, T/4.3L Merc's, full cover, camper cover, sleeps 6, full head & galley, **Asking \$48,500 OBO, 917-817-5084 info@deepwaterlanding.com 157632**

See Color Photo on the Internet



38' 1999 UNIFLITE SPORTFISH 671 Detroit Dsls, low hours rebuild, 13.9' beam, purchased in '99, **All Offers Considered 701-839-5411 lyle.w.dallman@gmail.com 158823**

See Color Photo on the Internet



29' 1992 SEA RAY Sundancer, Twin 4.3 V6, Beautiful inside and out! All new vinyl. Sleeps 6. Microwave, fridge, pump out head, AC/HT. Port engine new last yr. Boat is in water in west wildwood. **\$18,000 OBO, 267-640-1156 Burnslej1428@gmail.com 155723**

See Color Photo on the Internet



28' 1999 Albin TOURNAMENT, Yanmar Dsl, loaded w/newer elec's & gear (2020), ready to go offshore! **\$69,000 OBO, 917-817-5084 info@deepwaterlanding.com 158892**

See Color Photo on the Internet



28' 2019 GRADY-WHITE 285 fully loaded, sunshade, joystick & more, perfect condition! **\$249,800, 908-489-5098 158168**

See Color Photo on the Internet



27' 2019 CHRIS CRAFT CATALINA 27 HERITAGE, Trim Edition, T/Yamaha F200hp, approx 245 hrs, Blue Crystal Metallic hull, **\$195,000, 732-899-8010 sales@schradyachts.com 158413**

See Color Photo on the Internet



27' 2018 SEA CHASER CC, T/200hp Suzukis, lift kept (no bottom paint), loaded, 125 hours, **\$109,000, 917-817-5084 info@deepwaterlanding.com 158169**

See Color Photo on the Internet



25' 2007 PARKER 2501 DEEP V, T/Yamaha F150, Garmin elec, Taco ORs, Load Rite D/A trailer, **\$73,000, 732-899-8010 sales@schraderyachts.com 158757**

See Color Photo on the Internet



23' 2008 SUGAR SAND OASIS AIRWAVE, 250hp Opti Jet Drive, tower, bimini, snap in carpet, table, full cover, new wear ring & SS impeller (21), 280 hrs, fast boat, **\$15,995 OBO, 908-309-4016 almarmarine1@gmail.com 156290**

See Color Photo on the Internet



27' 2017 DEFIANCE 270 ADMIRAL, T/Honda 225hp, 235 hrs, t-tabs, cooler boxes/livewells, rocket launchers, RWWD, ORs, elec, **917-817-5084 info@deepwaterlanding.com 158665**

See Color Photo on the Internet



25' 2008 CHAPARRAL 256 SSI, Volvo I/O, new transom assembly, 165 original hours, ready to go! **MAKE OFFER! \$33,900, 917-817-5084 info@deepwaterlanding.com 155615**

See Color Photo on the Internet



22' 2016 BOSTON WHALER 220 OUTRAGE VERY RARE, T/150hp Mercury Verados, 157 hrs, dual Raymarine screens, loaded, head, t-top, good elec, trailer, one owner, **\$122,500, 917-817-5084 info@deepwaterlanding.com 156842**

See Color Photo on the Internet



26' 2012 CHAPARRAL 264 SUNESTA, Merc 350 Mag, sporty & functional, vacuflush head & sink, manifolds & risers recently installed, brand new trailer, **\$55,000, 609-693-9423 tidesendmarina1@gmail.com 158756**

See Color Photo on the Internet



24' 2016 YAMAHA 242X E SERIES, T/Engines, 40 hours, trailer, great condition, **\$59,900 OBO, 917-817-5084 info@deepwaterlanding.com 158891**

See Color Photo on the Internet



21' 2007 CHAPARRAL 214 SUNESTA DECK BOAT, 5.0L Volvoe I/O, 241 hrs, EZ Loader DA trailer, **\$29,500, 732-899-8010 sales@schraderyachts.com 158893**

See Color Photo on the Internet



25' 2016 SEA RAY 250 SLX, Merc 8.2L 380hp DP, 270 hrs, loaded, excellent condition, **\$94,000 OBO, 917-817-5084 info@deepwaterlanding.com 158890**

See Color Photo on the Internet



24' 2004 CHAPARRAL SIGNATURE, 5.0L Volvo Penta, 360 hours, FF, GPS, well cared for & it shows, in water for test drive, **\$24,000 MAKE OFFER, 609-287-2283 bhow127@aol.com 156446**

See Color Photo on the Internet



21' 1976 BOSTON WHALER OUTRAGE, 1996 150hp Johnson Ocean Runner, professionally restored, turn key, ready to go!, **\$19,500, 732-270-0022 nelsonmarinebasin@comcast.net 157989**

See Color Photo on the Internet



25' 2014 Tidewater 250 CC, 150 Yamaha 4 strokes, 2014 Tidewater w/ twin engines and 200 hours on engines, original owner and clean well taken care of boat w/ trailer, **\$75,000 609-488-0327 Scottfriedlander172@gmail.com 158897**

See Color Photo on the Internet



23' 2001 CONTENDER CC, New T/Honda 150IST w/5yr warr, new: steering, Garmin w/18" radar, interior, paint, stereo/speakers, Eisenglass, trl, turn key, **\$79,500, 917-817-5084 info@deepwaterlanding.com 158664**

See Color Photo on the Internet



18' 2001 BOW RIDER BOWRIDER Merc 4.3L V6, new manifolds & risers, new thermostat, runs great, **\$9,000 908-868-6026 reeldeelusa@verizon.net 158718**

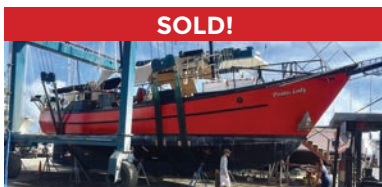
See Color Photo on the Internet



23' 2001 HYDRA-SPORTS SEA HORSE, 2016 250hp Yamaha (DEC/fly-by wire), Simrad electronics, **\$31,500, 917-817-5084 info@deepwaterlanding.com 158889**



Worldwide Yacht Sales | Yacht Charters | New Yacht Construction



SOLD!

72' Trade Rover



SOLD!

50' Chris-Craft



SOLD!

48' Evans Boats



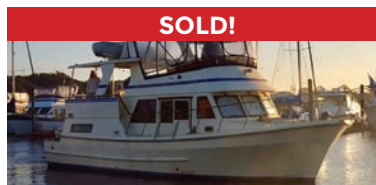
SOLD!

44' DeFever



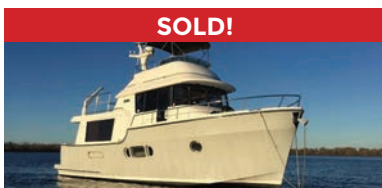
SOLD!

44' Gulfstar



SOLD!

42' Fu Hwa



SOLD!

40' Fathom



SOLD!

40' Hinckley



SOLD!

36' C&C



SOLD!

36' Bristol



SOLD!

32' Eagle



SOLD!

26' Sisu

List your boat with us and join our **SOLD** list!

To see more details about these and all other yachts around the globe, please visit our website below.

Annapolis, MD • St. Michaels, MD • Delaware City, DE • Deltaville, VA • Woodbridge, VA
Telephone: 410.919.4900 • Email: info@curtisstokes.net

www.curtisstokes.net



**OWN the BOAT.
OWN the SEA.**



For low rates, long terms, repower loans and to finance boats of **any age**, choose BEST



CALL a LOAN OFFICER NOW
1-800-USA-1965 ext 2



or APPLY in JUST 5 MINUTES
JJBestBoatLoans.com



Subject to consumer loan program requirements and credit approval. Certain fees, closing costs and restrictions may apply. Minimum loan amount for pleasure use is \$10,000 in all states. J.J. Best & Company operates under the name J.J. Best Banc and Company and J.J. Best Bank and Company.



WATERFRONT MARINE

#1 GOLL AVE, SOMERS POINT, NJ ~ 609-926-1700
 281 PRINCETON AVE, BRICK, NJ ~ *Featuring Chaparral* ~ 732-202-6961
 2822 SOLOMON'S ISLAND RD, EDGEWATER, MD ~ 443-949-9041

Premium Brands ~ Exceptional Service

WWW.WATERFRONTMARINE.COM

BOATS AVAILABLE IN STOCK & PRODUCTION SLOTS AVAILABLE TO CUSTOMIZE!

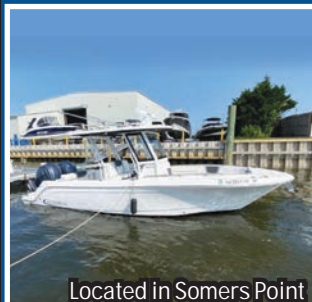
ROBALO
R250
NEW MODEL!

CHAPARRAL
 PASSION. PRIDE. SINCE 1965.
NEW MODEL!
250 OSX

BENNINGTON
23 LSB **IN STOCK!**

May-Craft
 The Perfect Craft for Your Sport
208 CC **IN STOCK!**
NEW MODEL!

- PREOWNED BOATS -



Located in Somers Point

2022 Robalo R272
 T/Yamaha F250XCB • **\$189,900**



Located in Somers Point

2021 25 Bennington 25QX
 250hp Yamaha V-Max,
 loaded • **\$159,900**



Located in Somers Point

2015 Regal 24 Fasdeck
 Volvo Penta 5.0L 270 DP • **\$43,900**

2022 Contender 44 ST



Factory Demo!
 Triple Yamaha 425 XTO's, electronics,
 Sea Keeper, loaded w/options &
 features, new warranties,
 Available for Immediate Delivery!
Call Today for Pricing!

BOWRIDERS & PONTOONS

30' '22 Chaparral 300 OSX, T/Yamaha F300, Joystick docking.....	\$279,900
30' '19 Chaparral 300 OSX, Twin Yamaha F300.....	SOLD
30' '14 Chaparral 307 SSX, T/Volvo Penta 300DP, joystick.....	Pending
28' '21 Chaparral 280 OSX, T/Yamaha F200.....	\$179,900
27' '07 Chaparral 276 SSi, Volvo Penta 8.1 GI DP.....	\$66,900
26' '21 Chaparral 267 SSX, Volvo Penta 350 DP.....	SOLD
26' '13 Sea Ray 260 Sundeck, Merc 350 Mag 300hp Bili.....	Pending
26' '19 Chaparral 264 Sunesta, Volvo Penta 350 DP.....	Pending
26' '14 Chaparral 264 Sunesta, Volvo Penta 320DP, 62 hrs.....	Pending
25' '21 Bennington 25QXFBWA, Yamaha F250.....	\$159,900
25' '16 Chaparral 250 Suncoast, Yamaha F300, lift kept.....	Pending
24' '15 Regal 24 Fasdeck, Volvo Penta 5.0L 270 DP.....	\$43,900
24' '11 Chaparral 246 SSi, Volvo Penta 5.7L GI 300 DP.....	Pending
24' '19 Chaparral 244 Sunesta, Volvo Penta 300 DP.....	Pending
23' '16 Cypress Cay Seabreeze 230 Tritoon, Mercury 150XL 4-stroke.....	\$29,900
23' '06 Sweetwater 2386F Pontoon, Yamaha F90.....	\$19,900
22' '16 Chaparral 224 Sunesta, Volvo Penta 280.....	\$47,900
22' '21 Bennington 22LSRD, Yamaha F150.....	\$59,900
22' '22 Monterey M225, Mercury 225hp.....	\$59,900

21' '19 Chaparral OB 21 H2O Sport, Yamaha F150.....	SOLD
20' '17 Regal 2000 ES Bowrider, Volvo Penta, 40 hours.....	Pending

FISHING BOATS

36' '22 Robalo R360 CC, Triple Yamaha F300, lift kept.....	\$597,000
31' '22 Robalo R317, T/Yamaha F300, Joystick docking.....	\$289,900
27' '22 Robalo R272, T/Yamaha F250XCB.....	\$189,900
24' '18 Robalo R242 CC, Yamaha F300.....	SOLD
22' '16 Robalo R227, Yamaha F200.....	Pending
20' '18 Robalo R200, Yamaha F150.....	SOLD
20' '18 Robalo R207 DC, Yamaha F150.....	Pending
18' '18 Bayliner Element CC, Mercury 115hp, trailer.....	\$24,900
13' '14 Boston Whaler Super Sport, Merc 40hp.....	\$16,900

CRUISERS & CUDDY CABINS

52' '08 Sea Ray 52 Sedan Bridge, T/QSM-11 Cummins Dsl.....	\$536,900
27' '19 Chaparral 270 Signature, Volvo Penta V8 300 DP, gen.....	\$114,900
23' '11 Crownline 236SC, Merc 350 Mag Bili, Loadrite galv roller trl.....	\$27,900

PERSONAL WATERCRAFT

2016 Sea Doo GTR 215, w/trailer.....	\$9,500
--------------------------------------	---------



AUTHORIZED PARTS & SERVICE



NOW IS THE TIME TO BUY!

OPEN 7 DAYS A WEEK



FOUR WINNS



KW KEY WEST



Scout
Discover More...



Great Selection of
Pontoons In Stock!
Call for Info!



G3 Boats



Need a Trailer?
We Have Them
In Stock!

YAMAHA BUILT TO LAST

410.287.8280

ANCHOR BOATS
North East, Maryland

www.AnchorBoat.com

448 MAULDIN AVE | NORTH EAST, MD 21901

Parts & Service
General Boat Repairs
High & Dry Boat Storage